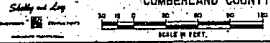
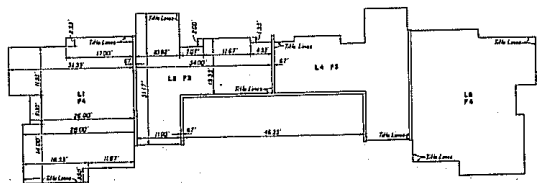


DECLARATION PLAN
SITE PLAN
**WESTWOOD VILLAGE
CONDOMINIUM**

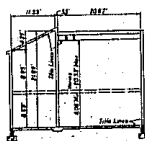
EAST PENNSBORO TOWNSHIP
CUMBERLAND COUNTY, PENNSYLVANIA

SHEET NO. A-2

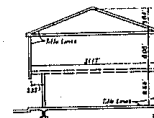




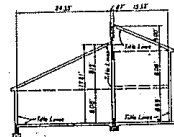
SECOND FLOOR PLAN



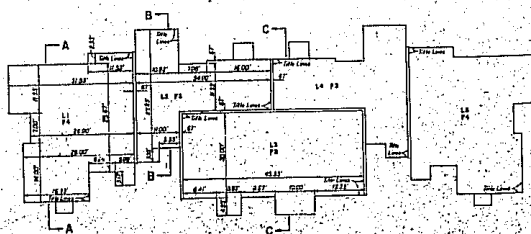
SECTION A-A



SECTION B-B



SECTION C-C



FIRST FLOOR PLAN

DECLARATION PLAN
 BUILDING NO. 1
**WESTWOOD VILLAGE
 CONDOMINIUM**

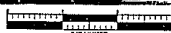
EAST PENNSBORO TOWNSHIP
 CUMBERLAND COUNTY, PENNSYLVANIA

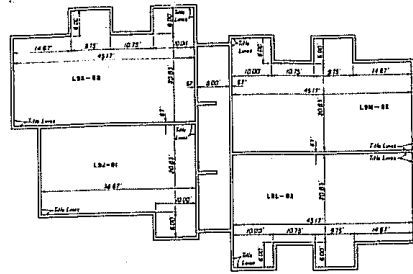
Plat No. 15-C

Scale and Date

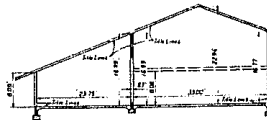


SHEET NO. 1

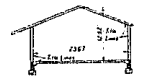




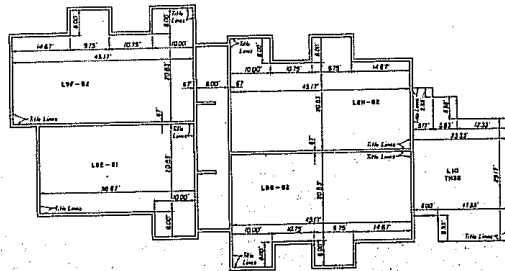
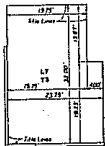
THIRD FLOOR PLAN



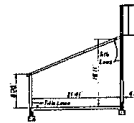
SECTION A-A



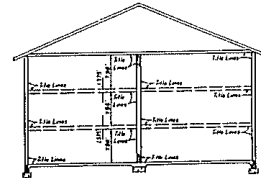
SECTION B-B



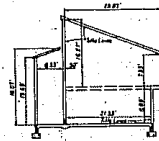
SECOND FLOOR PLAN



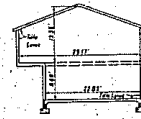
SECTION C-C



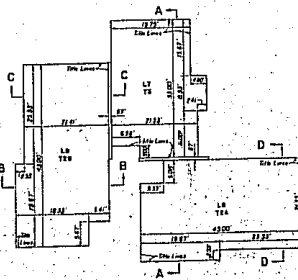
SECTION E-E



SECTION F-F



SECTION G-G



FIRST FLOOR PLAN



SECTION D-D



SECTION H-H

DECLARATION PLAN
BUILDING NO. 2
WESTWOOD VILLAGE
CONDOMINIUM

EAST PENNSYLVANIA TOWNSHIP
 CUMBERLAND COUNTY, PENNSYLVANIA

SHEET NO. B-2

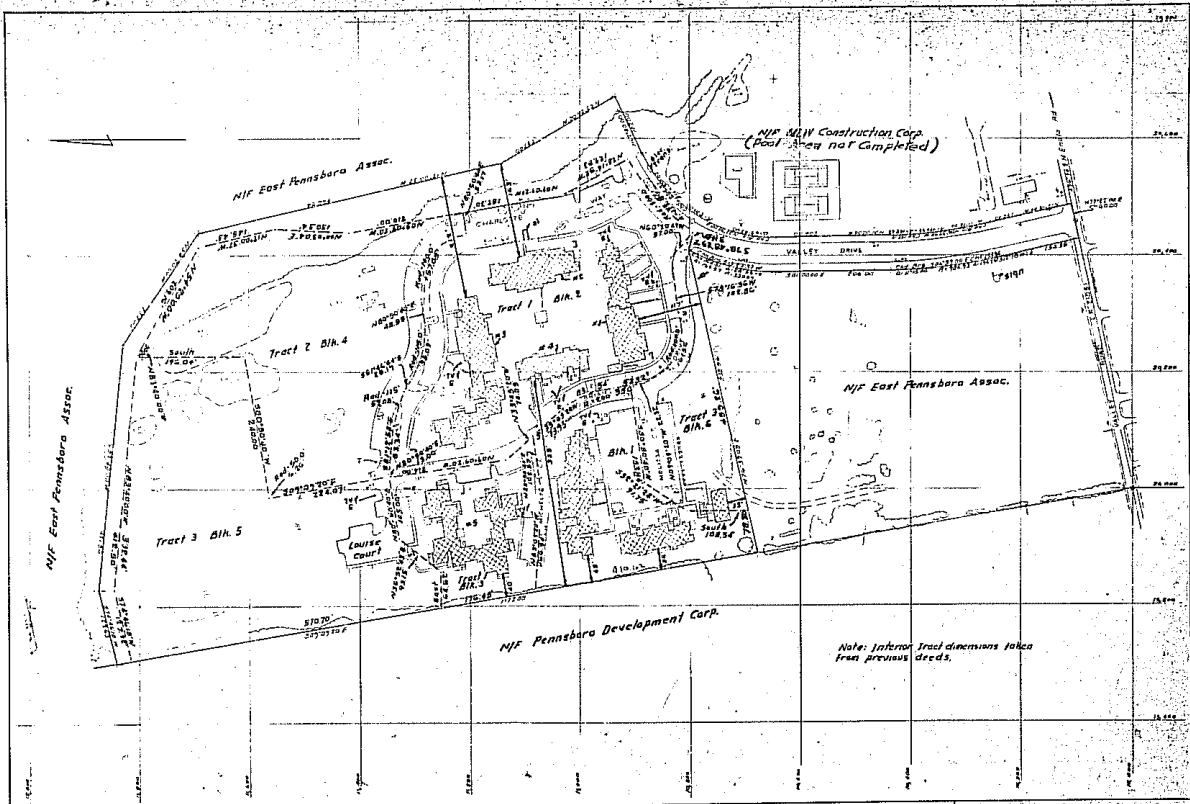
Plot 96 P9 15-D

RECORDED - OFFICE OF THE
REGISTERED CLERK
CUMBERLAND COUNTY
PENNSYLVANIA
Jul 26 10 32 AM '76

THE FIRST AMENDMENT
TO
DECLARATION PLAN
WESTWOOD VILLAGE CONDOMINIUM
East Pennsboro Township
Cumberland County, Pennsylvania

<p>THE FIRST AMENDMENT TO THE DECLARATION PLAN OF THE WESTWOOD VILLAGE CONDOMINIUM, EAST PENNSBORO TOWNSHIP, CUMBERLAND COUNTY, PENNSYLVANIA.</p> <p>1. The purpose of this First Amendment is to amend the Declaration Plan of the Westwood Village Condominium, East Pennsboro Township, Cumberland County, Pennsylvania, as recorded in the Office of the Registered Clerk, Cumberland County, Pennsylvania, on July 26, 1976, in Book 25, Page 12.</p> <p>2. The Westwood Village Condominium is a condominium project consisting of 12 units, located in East Pennsboro Township, Cumberland County, Pennsylvania. The units are described as follows:</p> <p>3. The Westwood Village Condominium is a condominium project consisting of 12 units, located in East Pennsboro Township, Cumberland County, Pennsylvania. The units are described as follows:</p>	<p>4. The Westwood Village Condominium is a condominium project consisting of 12 units, located in East Pennsboro Township, Cumberland County, Pennsylvania. The units are described as follows:</p>	<p>5. The Westwood Village Condominium is a condominium project consisting of 12 units, located in East Pennsboro Township, Cumberland County, Pennsylvania. The units are described as follows:</p>	<p>6. The Westwood Village Condominium is a condominium project consisting of 12 units, located in East Pennsboro Township, Cumberland County, Pennsylvania. The units are described as follows:</p>	<p>Prepared By: MICHAEL C. D'ANGELO Registered Surveyor 714 Bridge Street New Cumberland, Pennsylvania Telephone 717-2328054</p> <p><i>Michael C. D'Angelo</i></p> <p>DMG NO. 15-107 Sheet 1 of 1</p>
--	--	--	--	--





Legend

- Patio
- Drain Inlet
- ⋈ Light Pole
- ⋈ Telephone Pole
- ⋈ Pipe Outlet
- ⋈ Sign
- E- Electric Cable
- T- Telephone Cable
- TV- Television Cable

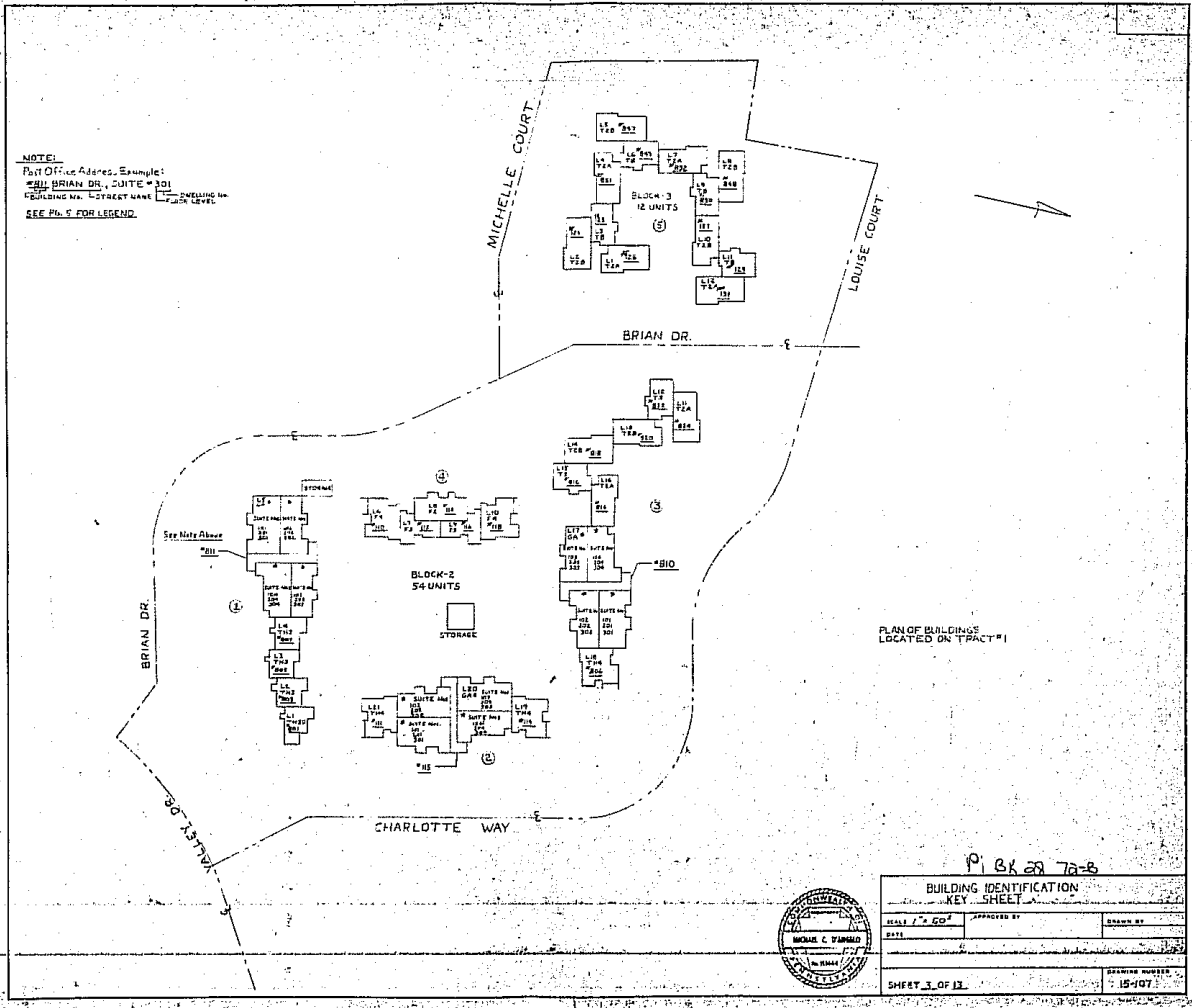
Plot 28 A 70-A



Scale: 1" = 100'
 DWG. NO. 15-107 Sheet 1 of 1



NOTE:
 Full Office Address Example:
 101 BRIAN DR., SUITE # 101
 BUILDING NO. STREET NAME CITY STATE ZIP
 SEE #s FOR LEGEND.



UNRECORDED
 15-107
 15-107
 UNRECORDED

				ELEVATIONS						
BUILDING No.	BLOCK No.	UNIT DESIGNATION AND POST OFFICE ADDRESS	FLOOR PLAN No.	1 st FLOOR	1 st FLOOR CEILING	2 nd FLOOR	2 nd FLOOR CEILING	3 rd FLOOR	3 rd FLOOR CEILING	CHALET CEILING
		801 BRIAN DR.	15-107.4	442.39	452.43	451.16	459.25			
		805	15-107.1	443.05	451.09	451.80	459.91			
		807	15-107.1	443.05	451.09	451.80	459.91			
		811 SUITE No. 101	15-107.4	444.44	454.49	453.16	461.27			
		811	201			455.82	463.87			
1		811	102	446.44	454.49			465.20	473.25	
		811	202			455.82	463.87			
		811	302			455.82	463.87	465.20	473.25	
		811	103	446.44	454.49			465.20	473.25	
		811	203			455.82	463.87			
		811	303			455.82	463.87	465.20	473.25	
		811	104	446.44	454.49			465.20	473.25	
		811	204			455.82	463.87			
		811 BRIAN DR.	15-107.4			455.82	463.87	465.20	473.25	
		815 CHARLOTTE WAY	15-107.2	440.75	447.85	449.50	457.50	465.20	473.25	461.10
		SUITE No. 101	15-107.6	441.38	449.43					
		815	101			450.76	458.81			
		815	102	441.38	449.43			460.14	468.19	
2		815	202			450.76	458.81			
		815	302			450.76	458.81	460.14	468.19	
		815	103	441.38	449.43			460.14	468.19	
		815	203			450.76	458.81			
		815	303			450.76	458.81	460.14	468.19	
		815	104	441.38	449.43			460.14	468.19	
		815	204			450.76	458.81			
		815	304			450.76	458.81	460.14	468.19	461.73
		815	105	441.38	449.43			460.14	468.19	463.54
		815	205			450.76	458.81			
		815	305			450.76	458.81	460.14	468.19	
		815	106	441.38	449.43			460.14	468.19	
		815	206			450.76	458.81			
		815	306			450.76	458.81	460.14	468.19	
		815	107	441.38	449.43			460.14	468.19	
		815	207			450.76	458.81			
		815	307			450.76	458.81	460.14	468.19	
		815	108	441.38	449.43			460.14	468.19	
		815	208			450.76	458.81			
		815	308			450.76	458.81	460.14	468.19	
		815	109	441.38	449.43			460.14	468.19	
		815	209			450.76	458.81			
		815	309			450.76	458.81	460.14	468.19	
		815	110	441.38	449.43			460.14	468.19	
		815	210			450.76	458.81			
		815	310			450.76	458.81	460.14	468.19	
		815	111	441.38	449.43			460.14	468.19	
		815	211			450.76	458.81			
		815	311			450.76	458.81	460.14	468.19	
		815	112	441.38	449.43			460.14	468.19	
		815	212			450.76	458.81			
		815	312			450.76	458.81	460.14	468.19	
		815	113	441.38	449.43			460.14	468.19	
		815	213			450.76	458.81			
		815	313			450.76	458.81	460.14	468.19	
		815	114	441.38	449.43			460.14	468.19	
		815	214			450.76	458.81			
		815	314			450.76	458.81	460.14	468.19	
		815	115	441.38	449.43			460.14	468.19	
		815	215			450.76	458.81			
		815	315			450.76	458.81	460.14	468.19	
		815	116	441.38	449.43			460.14	468.19	
		815	216			450.76	458.81			
		815	316			450.76	458.81	460.14	468.19	
		815	117	441.38	449.43			460.14	468.19	
		815	217			450.76	458.81			
		815	317			450.76	458.81	460.14	468.19	
		815	118	441.38	449.43			460.14	468.19	
		815	218			450.76	458.81			
		815	318			450.76	458.81	460.14	468.19	
		815	119	441.38	449.43			460.14	468.19	
		815	219			450.76	458.81			
		815	319			450.76	458.81	460.14	468.19	
		815	120	441.38	449.43			460.14	468.19	
		815	220			450.76	458.81			
		815	320			450.76	458.81	460.14	468.19	
		815	121	441.38	449.43			460.14	468.19	
		815	221			450.76	458.81			
		815	321			450.76	458.81	460.14	468.19	
		815	122	441.38	449.43			460.14	468.19	
		815	222			450.76	458.81			
		815	322			450.76	458.81	460.14	468.19	
		815	123	441.38	449.43			460.14	468.19	
		815	223			450.76	458.81			
		815	323			450.76	458.81	460.14	468.19	
		815	124	441.38	449.43			460.14	468.19	
		815	224			450.76	458.81			
		815	324			450.76	458.81	460.14	468.19	
		815	125	441.38	449.43			460.14	468.19	
		815	225			450.76	458.81			
		815	325			450.76	458.81	460.14	468.19	
		815	126	441.38	449.43			460.14	468.19	
		815	226			450.76	458.81			
		815	326			450.76	458.81	460.14	468.19	
		815	127	441.38	449.43			460.14	468.19	
		815	227			450.76	458.81			
		815	327			450.76	458.81	460.14	468.19	
		815	128	441.38	449.43			460.14	468.19	
		815	228			450.76	458.81			
		815	328			450.76	458.81	460.14	468.19	
		815	129	441.38	449.43			460.14	468.19	
		815	229			450.76	458.81			
		815	329			450.76	458.81	460.14	468.19	
		815	130	441.38	449.43			460.14	468.19	
		815	230			450.76	458.81			
		815	330			450.76	458.81	460.14	468.19	
		815	131	441.38	449.43			460.14	468.19	
		815	231			450.76	458.81			
		815	331			450.76	458.81	460.14	468.19	
		815	132	441.38	449.43			460.14	468.19	
		815	232			450.76	458.81			
		815	332			450.76	458.81	460.14	468.19	
		815	133	441.38	449.43			460.14	468.19	
		815	233			450.76	458.81			
		815	333			450.76	458.81	460.14	468.19	
		815	134	441.38	449.43			460.14	468.19	
		815	234			450.76	458.81			
		815	334			450.76	458.81	460.14	468.19	
		815	135	441.38	449.43			460.14	468.19	
		815	235			450.76	458.81			
		815	335			450.76	458.81	460.14	468.19	
		815	136	441.38	449.43			460.14	468.19	
		815	236			450.76	458.81			
		815	336			450.76	458.81	460.14	468.19	
		815	137	441.38	449.43			460.14	468.19	
		815	237			450.76	458.81			
		815	337			450.76	458.81	460.14	468.19	
		815	138	441.38	449.43			460.14	468.19	
		815	238			450.76	458.81			
		815	338			450.76	458.81	460.14	468.19	
		815	139	441.38	449.43			460.14	468.19	
		815	239			450.76	458.81			
		815	339			450.76	458.81	460.14	468.19	
		815	140	441.38	449.43			460.14	468.19	
		815	240			450.76	458.81			
		815	340			450.76	458.81	460.14	468.19	
		815	141	441.38	449.43			460.14	468.19	
		815	241			450.76	458.81			
		815	341			450.76	458.81	460.14	468.19	
		815	142	441.38	449.43			460.14	468.19	
		815	242			450.76	458.81			
		815	342			450.76	458.81	460.14	468.19	
		815	143	441.38	449.43			460.14	468.19	
		815	243			450.76	458.81			
		815	343			450.76	458.81	460.14	468.19	
		815	144	441.38	449.43			460.14	468.19	
		815	244			450.76	458.81			
		815	344			450.76	458.81	460.14	468.19	
		815	145	441.38	449.43			460.14	468.19	
		815	245			450.76	458.81			
		815	345			450.76	458.81	460.14	468.19	
		815	146	441.38	449.43			460.14	468.19	
		815	246			450.76	458.81			
		815	346			450.76	458.81	460.14		

BLOCK-3-BUILDING-5

UNIT No.	FLOOR PLAN No.
*125 L1-T2A	15-107.5
*121 L2-T2B	15-107.5
*123 L3-TB	15-107.5
*851 L4-T2A	15-107.5
*847 L5-T2B	15-107.5
*849 L6-TB	15-107.5
*852 L7-T2A	15-107.5
*848 L8-T2B	15-107.5
*850 L9-TB	15-107.5
*127 L10-T2B	15-107.5
*129 L11-TB	15-107.5
*131 L12-T2A	15-107.5

TOTAL CONTENTS

9-2 BEDROOMS · 4-3 BEDROOMS
12 UNITS

BLOCK-2-BUILDING-3

UNIT No.	FLOOR PLAN No.
*824 L11-T2A	15-107.5
*822 L12-T3	15-107.5
*820 L13-T2B	15-107.5
*818 L14-T2B	15-107.5
*816 L15-TB	15-107.5
*814 L16-T2A	15-107.5
*810 L17-GA	15-107.6
*806 L18-TH4	15-107.2

TOTAL CONTENTS

13-2 BEDROOMS · 3-1 BEDROOM
3-3 BEDROOMS · 1-4 BEDROOMS
19 UNITS

BLOCK-2-BUILDING-1

UNIT No.	FLOOR PLAN No.
*801 L1-TH3D	15-107.4
*803 L2-TH3	15-107.1
*805 L3-TH3	15-107.1
*807 L4-TH3	15-107.1
*811 L5-GA	15-107.6

TOTAL CONTENTS

9-2 BEDROOMS · 3-1 BEDROOM · 4-3 BEDROOMS
16 UNITS

BLOCK-2-BUILDING-2

UNIT No.	FLOOR PLAN No.
*119 L19-TH4	15-107.2
*115 L20-GA	15-107.6
*111 L21-TH4	15-107.2

TOTAL CONTENTS

9-2 BEDROOMS · 3-1 BEDROOM
2-4 BEDROOMS
14 UNITS

LEGEND

- GA — GARDEN APARTMENT
- TH — TOWNHOUSE
- T — TRI-PLEX
- F — FIVE-PLEX
- B
- A } FOR LOCATION IDENTIFICATION
- D — WITH A DEN
- * — 2 BEDROOMS
- ★ — 1 BEDROOM
- L — CONSTRUCTION IDENTIFICATION
- ⊙ — BUILDING COMPLEX No.
- R — REVERSE FLOOR PLAN
- 3 — 3 BEDROOMS
- # — POST OFFICE ADDRESS & UNIT DESIGNATION
- SUITE SUB-SECTION of UNIT DESIGNATION

BLOCK-2-BUILDING-4

UNIT No.	FLOOR PLAN No.
*110 L6-F4	15-107.2
*112 L7-F3	15-107.3
*114 L8-F2	15-107.3
*116 L9-F3	15-107.3
*118 L10-F4	15-107.2

TOTAL CONTENTS

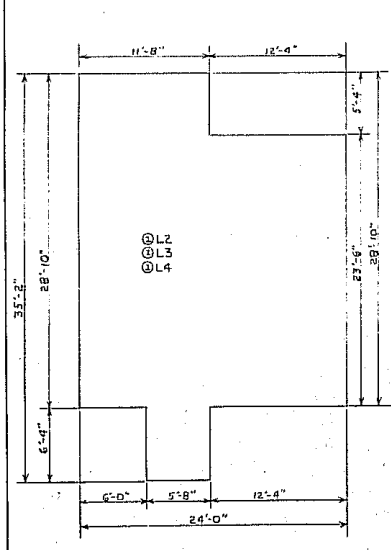
1-2 BEDROOMS · 2-3 BEDROOMS,
2-4 BEDROOMS
5 UNITS



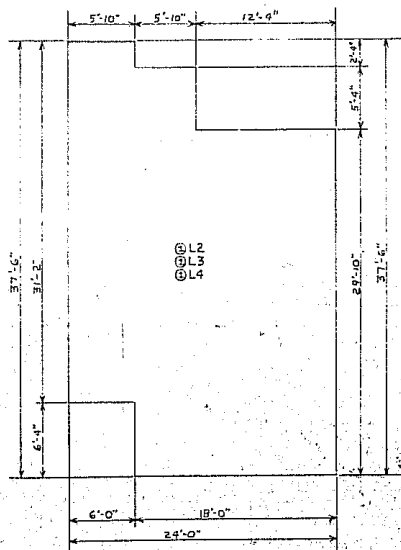
PL 68 29 19 7a-D

INDEX SHEET	
SHEET 5 OF 13	15-107

NOTE:
 SEE SEC. 4B OF DECLARATION CREATING & ESTABLISHING
 WESTWOOD VILLAGE CONDOMINIUM DATED JAN. 24, 1975
 FOR A TEXT DESCRIPTION OF UNIT BOUNDARIES.
 THIS NOTE ALSO APPLIES TO SHEET 1 THROUGH 11.



FIRST FLOOR

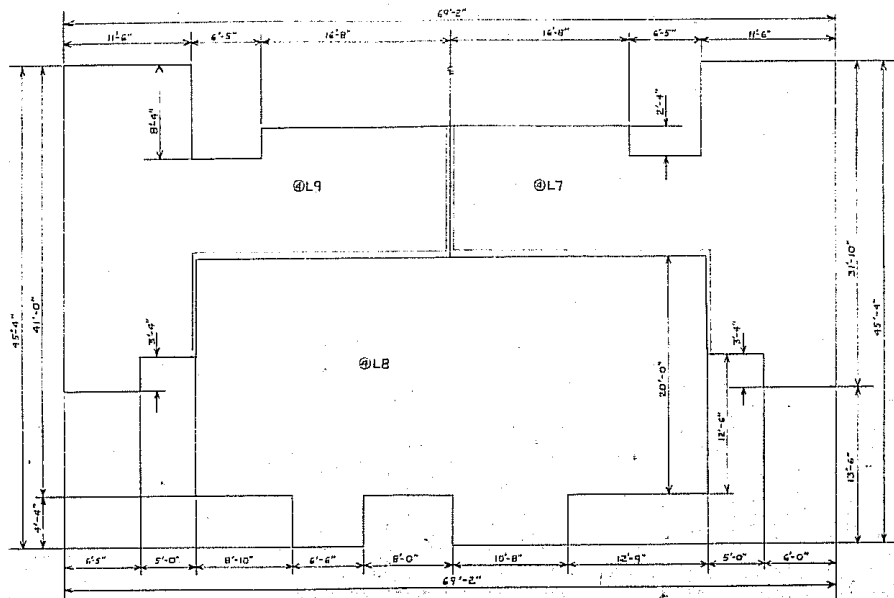


SECOND FLOOR

TOWNHOUSE
 SCALE: 1" = 5'-0"



15-107.1		PI BK 21 9 1a-E	
FLOOR PLAN			
DATE	DESIGNED BY	DRAWN BY	
SHEET 4 OF 11		15-107.1	



FIRST FLOOR

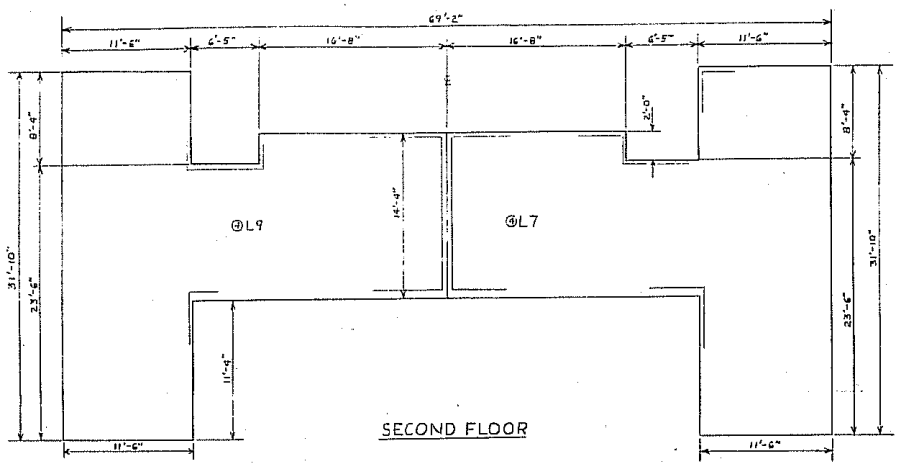
FIVE-PLEX BUILDING
SCALE 1/4" = 1'-0"



PL EX 28 pg 7a-f

FLOOR PLAN		
SCALE	APPROVED BY	DESIGNED BY
DATE		
SHEET 1 OF 13		DESIGNED NUMBER 22
		15-107-3





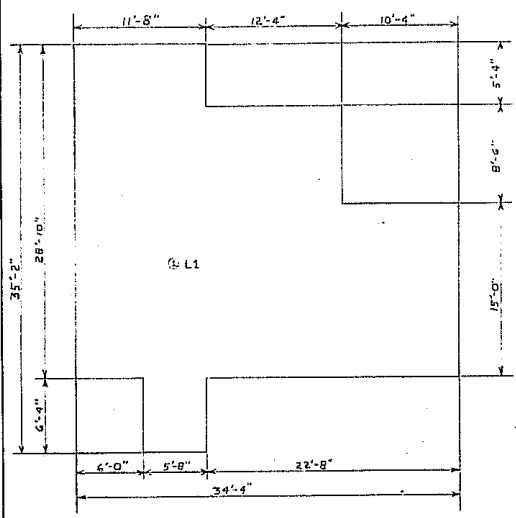
FIVE-PLEX BUILDING
SCALE: 1/8" = 1'-0"



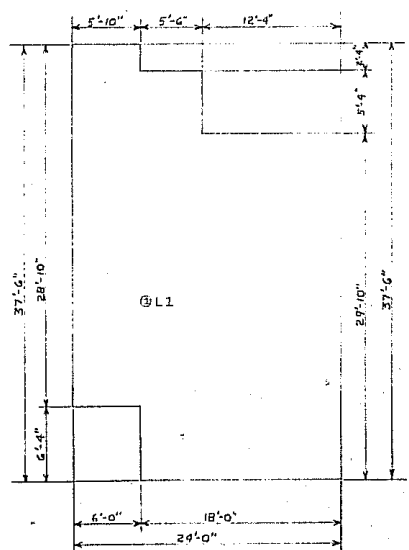
PL EX 28 19 72-6

FLOOR PLAN		
SCALE:	APPROVED BY:	DRAWN BY:
DATE:		
SHEET 8 OF 15		DRAWING NUMBER 15-107.3





FIRST FLOOR



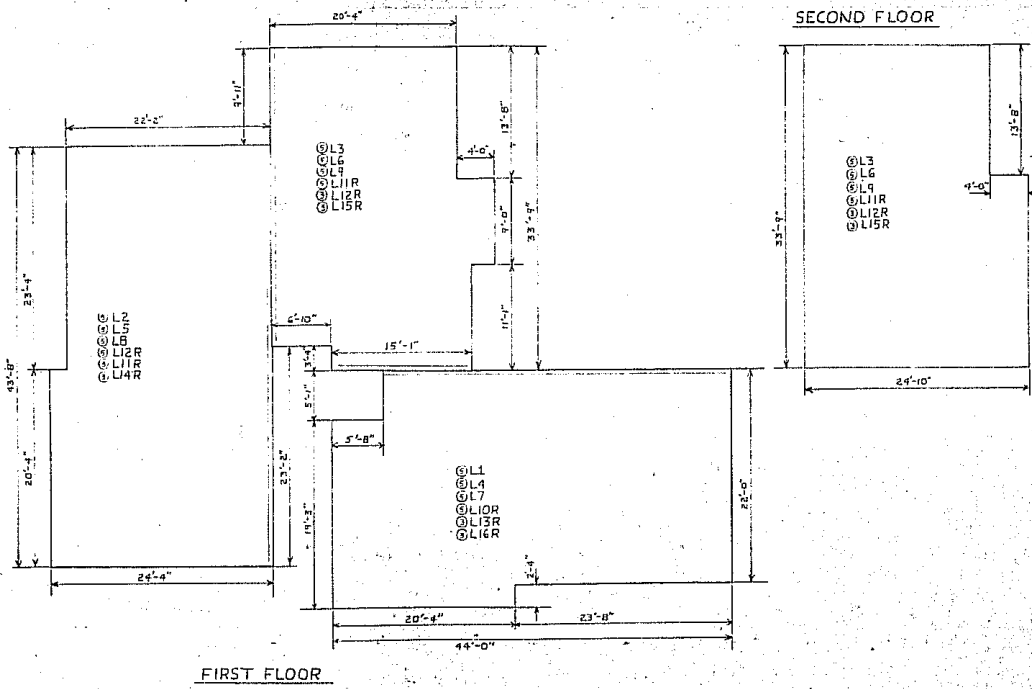
SECOND FLOOR

TOWNHOUSE with DEN
SCALE: 1/4" = 1'-0"



FLOOR PLAN		
DATE	APPROVED BY	BRANCH NO.
SHEET 2 OF 2		DRAWING NUMBER 15-107-0

PL 27 B 10-1



FIRST FLOOR

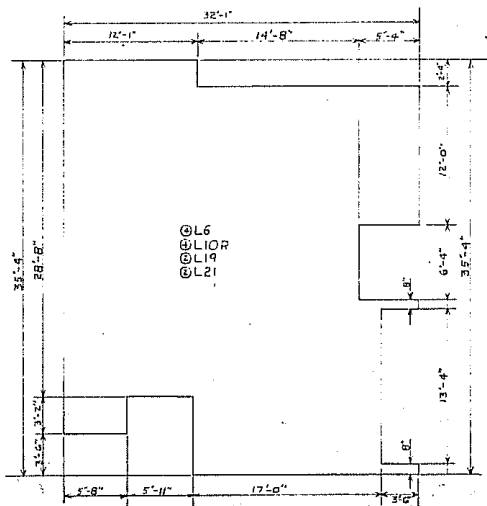
SECOND FLOOR

TRI-PLEX BUILDING
SCALE: 1"=4'-0"

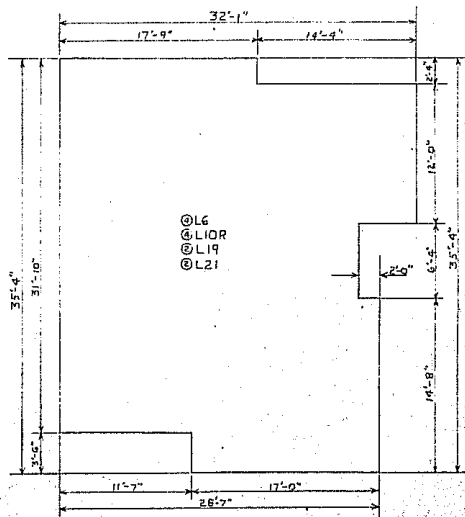
01 BK 29 pg 72-T



FLOOR PLAN	
DATE: 2018	APPROVED BY: [Signature]
DRAWN BY: [Signature]	
SHEET 10 OF 13	
15-107.5-C	



FIRST FLOOR



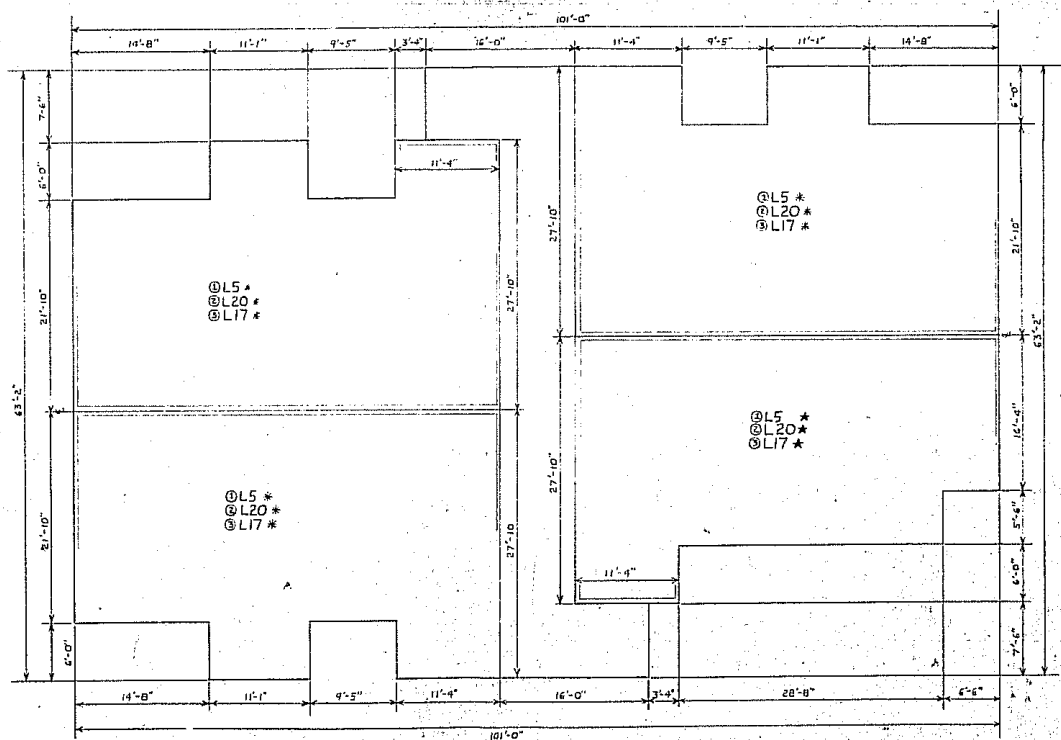
SECOND FLOOR

FIVE-PLEX TOWNHOUSE
SCALE 1/16" = 1'-0"



PI BK 28 89 78-3

FLOOR PLAN	
SHEET 11 OF 12	15-107.2



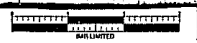
FIRST FLOOR

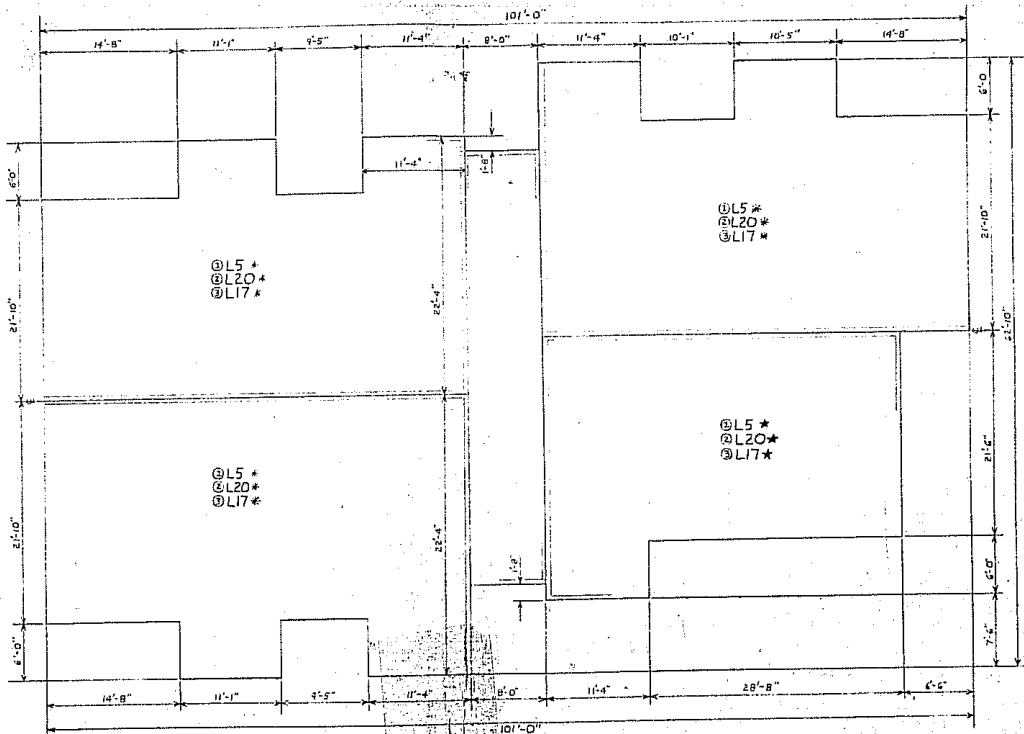
GARDEN APARTMENT
SCALE: 1/8" = 1'-0"



P. 131 pg. 7B-K

FLOOR PLAN	
DATE: 11/15/15	SCALE: 1/8" = 1'-0"
SHEET 12 OF 13	15-076





SECOND & THIRD FLOOR

PL 28 29 75-1

FLOOR PLAN

GARDEN APARTMENT



SHEET 13 OF 13



RECORDED BY THE
RECORDER OF DEEDS
CUMBERLAND COUNTY
PENNSYLVANIA
JUN 23 2 03 PM '78

THE SECOND AMENDMENT

TO

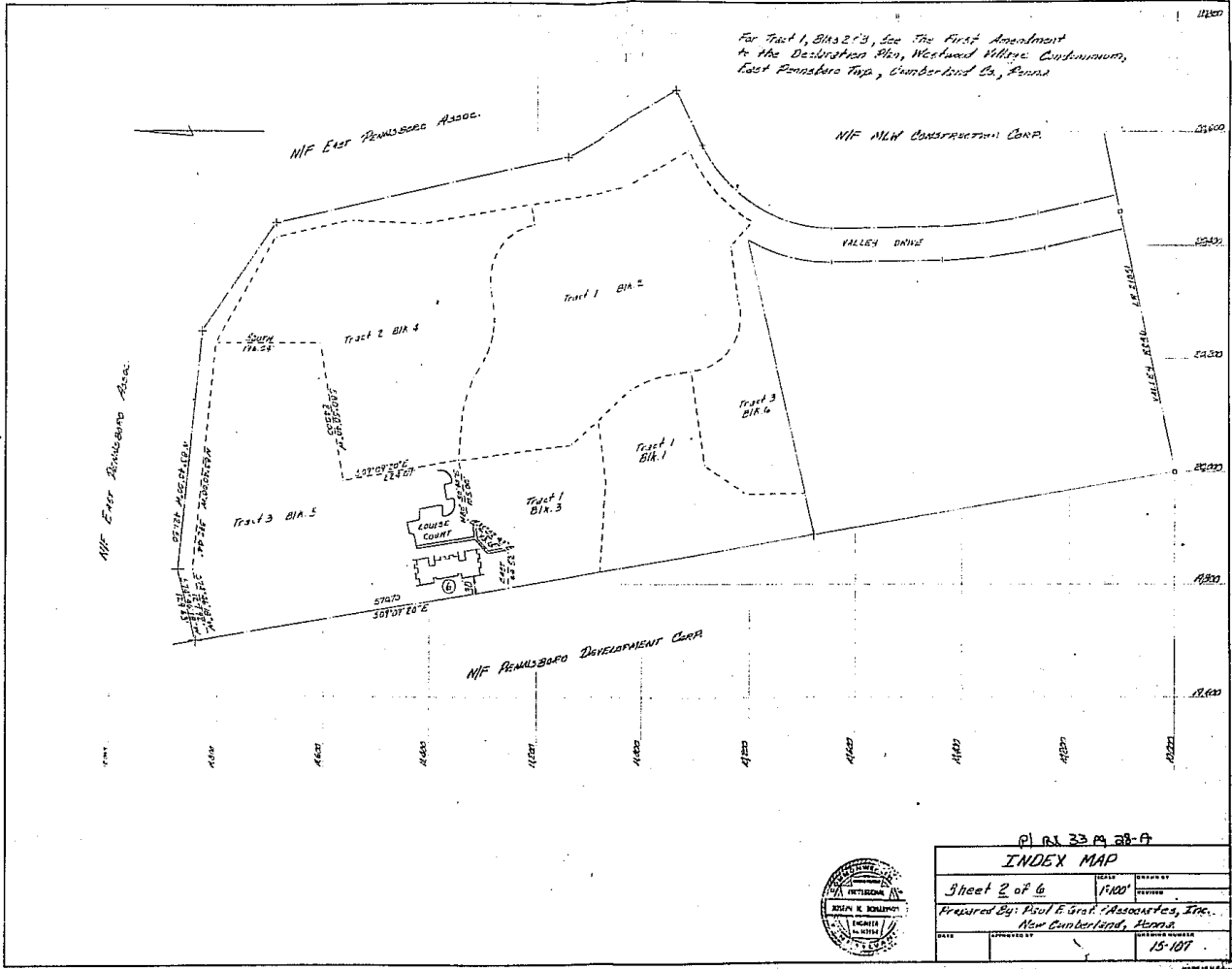
DECLARATION PLAN

WESTWOOD VILLAGE CONDOMINIUM

EAST PENNSBORO TOWNSHIP CUMBERLAND COUNTY, PENNSYLVANIA

<p>THE NAME OF THE LAW ENFORCER BY WHOM ENFORCED AS FOLLOWS:</p> <p>On January 28, 1978, the undersigned being an authorized agent of the State of Pennsylvania, do hereby certify that the following instrument, to-wit: a Declaration Plan, as amended by the Second Amendment, was duly recorded in the office of the Recorder of Deeds, Cumberland County, Pennsylvania, on June 16, 1978, at which time the same was duly acknowledged by the parties thereto.</p> <p>Attest my hand and the seal of the office of the Recorder of Deeds, Cumberland County, Pennsylvania, this 16th day of June, 1978.</p> <p>RECORDER OF DEEDS CUMBERLAND COUNTY, PENNSYLVANIA</p>	<p>THE UNDERSIGNED, a Registered Professional Engineer in the State of Pennsylvania, do hereby certify that the Declaration Plan, as amended by the Second Amendment, was duly recorded in the office of the Recorder of Deeds, Cumberland County, Pennsylvania, on June 16, 1978, at which time the same was duly acknowledged by the parties thereto.</p> <p>Attest my hand and the seal of the office of the Recorder of Deeds, Cumberland County, Pennsylvania, this 16th day of June, 1978.</p> <p>RECORDER OF DEEDS CUMBERLAND COUNTY, PENNSYLVANIA</p>	<p>THE UNDERSIGNED, a Registered Professional Engineer in the State of Pennsylvania, do hereby certify that the Declaration Plan, as amended by the Second Amendment, was duly recorded in the office of the Recorder of Deeds, Cumberland County, Pennsylvania, on June 16, 1978, at which time the same was duly acknowledged by the parties thereto.</p> <p>Attest my hand and the seal of the office of the Recorder of Deeds, Cumberland County, Pennsylvania, this 16th day of June, 1978.</p> <p>RECORDER OF DEEDS CUMBERLAND COUNTY, PENNSYLVANIA</p>	<p>THE UNDERSIGNED, a Registered Professional Engineer in the State of Pennsylvania, do hereby certify that the Declaration Plan, as amended by the Second Amendment, was duly recorded in the office of the Recorder of Deeds, Cumberland County, Pennsylvania, on June 16, 1978, at which time the same was duly acknowledged by the parties thereto.</p> <p>Attest my hand and the seal of the office of the Recorder of Deeds, Cumberland County, Pennsylvania, this 16th day of June, 1978.</p> <p>RECORDER OF DEEDS CUMBERLAND COUNTY, PENNSYLVANIA</p>	<p>PLB 33 pg 28</p> <p>PLANS PREPARED BY PAUL E. GROF & ASSOCIATES, INC. CONSULTING ENGINEERS NEW CUMBERLAND, PENNSYLVANIA</p> <p><i>J. P. A. B...</i> REG. PROF. ENGINEER JUNE 16, 1978</p> <p><i>Plan Book 33 Page 28</i></p>
---	---	---	---	---

For Tract 1, BIA 2, 3, see the first Amendment to the Declaration Plan, Westwood Village Condominiums, East Pennsboro Twp, Cumberland Co., Penna.

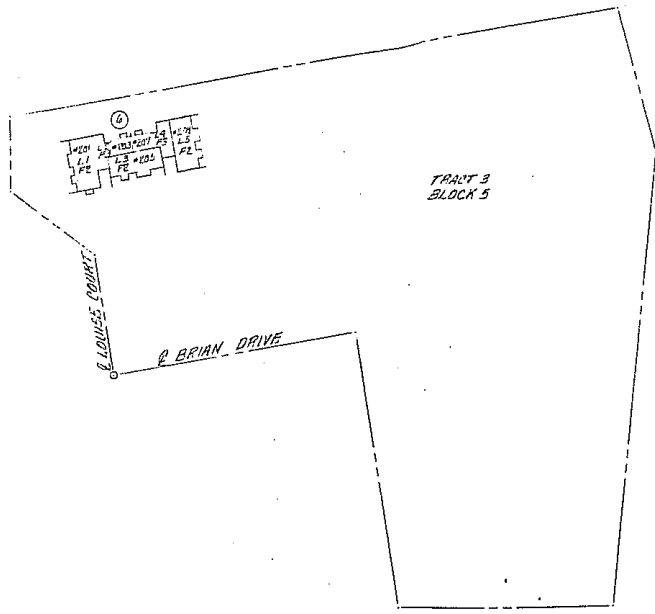


PLAN 33A 28-A

INDEX MAP	
Sheet 2 of 6	SCALE 1"=100'
Prepared By: Paul E. Grot Associates, Inc. New Cumberland, Penna.	
DATE	APPROVED BY
	15-107

HOE ENGINEERING & SURVEYING
1000 WESTWOOD VILLAGE DRIVE
NEW CUMBERLAND, PENNSYLVANIA 17051



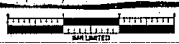


PLAN OF BUILDINGS
LOCATED ON TRACT 3



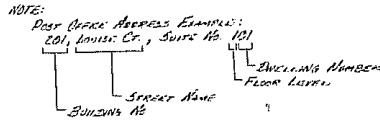
P1 61 35 19 28-B

BUILDING IDENTIFICATION KEY SHEET	
Sheet 3 of 6	SCALE 1"=50'
Prepared By: Paul E. Grub Assoc., Inc. New Cumberland, Penna.	
DATE	SECTION NUMBER
	15-107



BUILDING ADDRESS AND ELEVATIONS INDEX									
BUILDING NUMBER	BLOCK NUMBER	UNIT DESIGNATION AND POST OFFICE ADDRESS	FLOOR PLAN NUMBER	ELEVATIONS					
				1st Floor	1st Fl. Chnl.'s	2nd Floor	2nd Fl. Chnl.'s	3rd Floor	3rd Fl. Chnl.'s
⑥	5	201, LOUISE CR, SUITE# 101	15-107.3	455.34	463.44	---	---	---	---
⑥	5	202	102	455.34	463.44	464.69	472.23	---	---
⑥	5	203	103	455.34	463.44	---	---	---	---
⑥	5	204	104	455.34	463.44	474.61	474.23	---	---
⑥	5	207	105	455.34	463.44	---	---	---	---

BLOCK 5 - BUILDING 6		
I	UNIT NUMBER	FLOOR PLAN NUMBER
N	201 - L1 - F2	15-107.3
D	203 - L2 - F3	
E	205 - L3 - F2	
X	207 - L4 - F3	
	207 - L5 - F2	15-107.3



TOTAL CONTENTS

- 3 - 2 BEDROOMS
- 2 - 3 BEDROOMS
- 5 UNITS

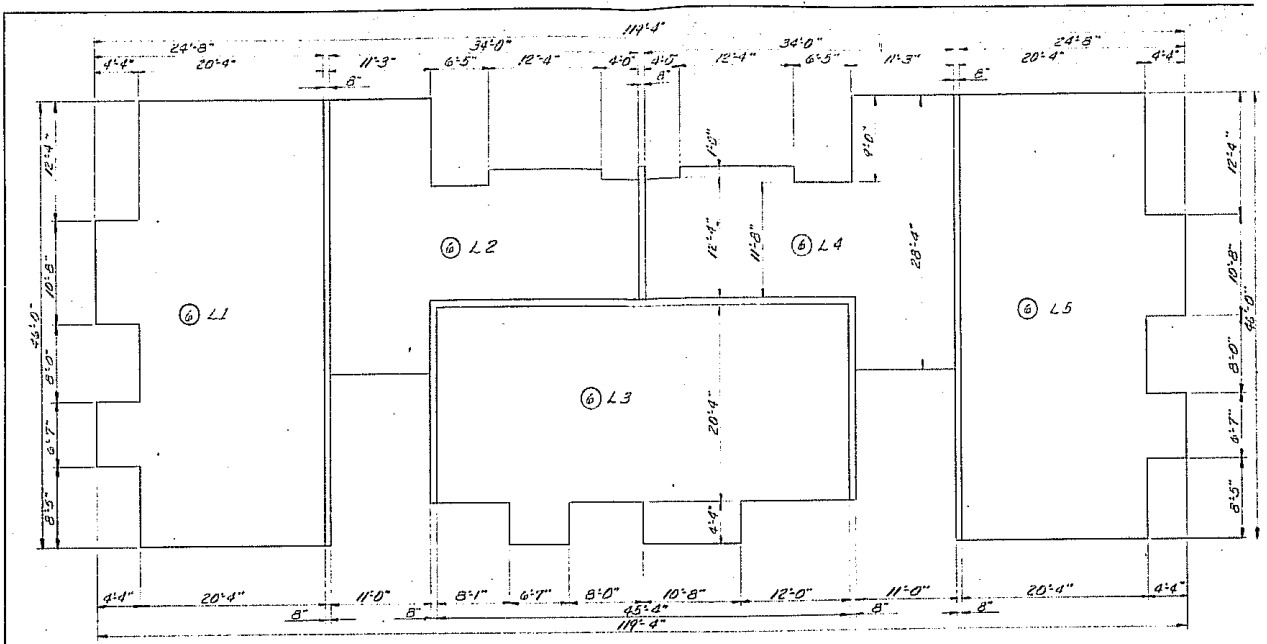
LEGEND

- F - Five Feet
- L - Construction Identification
- ⑥ - Building Complex Number
- 2 - 2 Bedrooms
- SUITE - Sub Section of Unit Designation



PI BL 35 09 28-C

BUILDING ADDRESS AND ELEVATIONS INDEX	
Sheet 4 of 6	SCALE
Prepared By: Edna K. Bullock, Inc. New Cumberland, Penna.	
DATE	15-107



FIRST FLOOR

FIVE-PLEX BUILDING
Scale: 1" = 6'-0"

01 62 33 m 58-1)

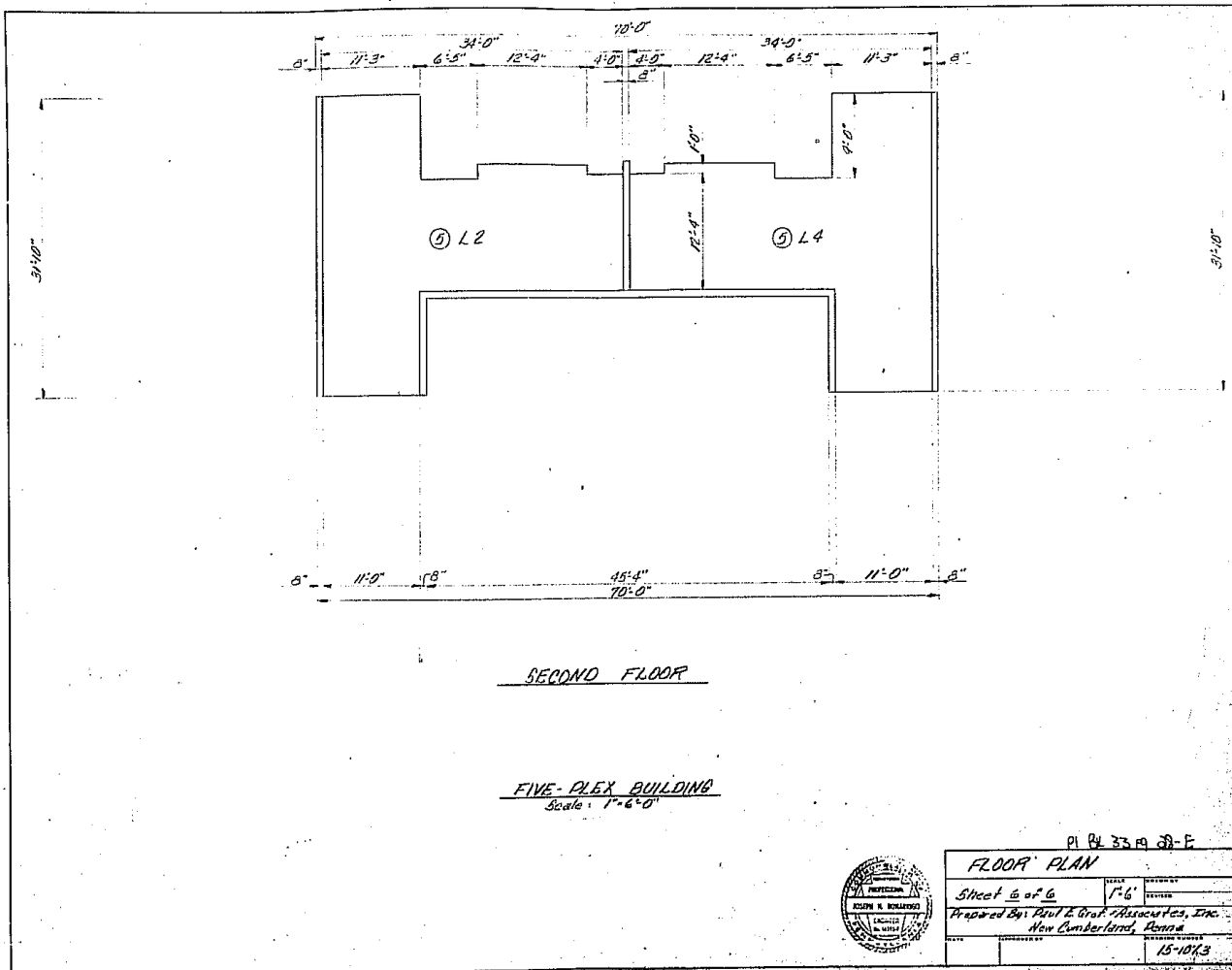


FLOOR PLAN	
Sheet 5 of 6	SCALE 1" = 6'
Prepared By: Abel E. Groff & Assoc., Inc. New Cumberland, Penna.	DATE
DATE	PROJECT NUMBER 15-1073

H-E ARCHITECTS INC. ARCHITECTS AND ENGINEERS



MADE IN U.S.A.



SECOND FLOOR

FIVE-PLEX BUILDING
Scale: 1/4" = 1'-0"



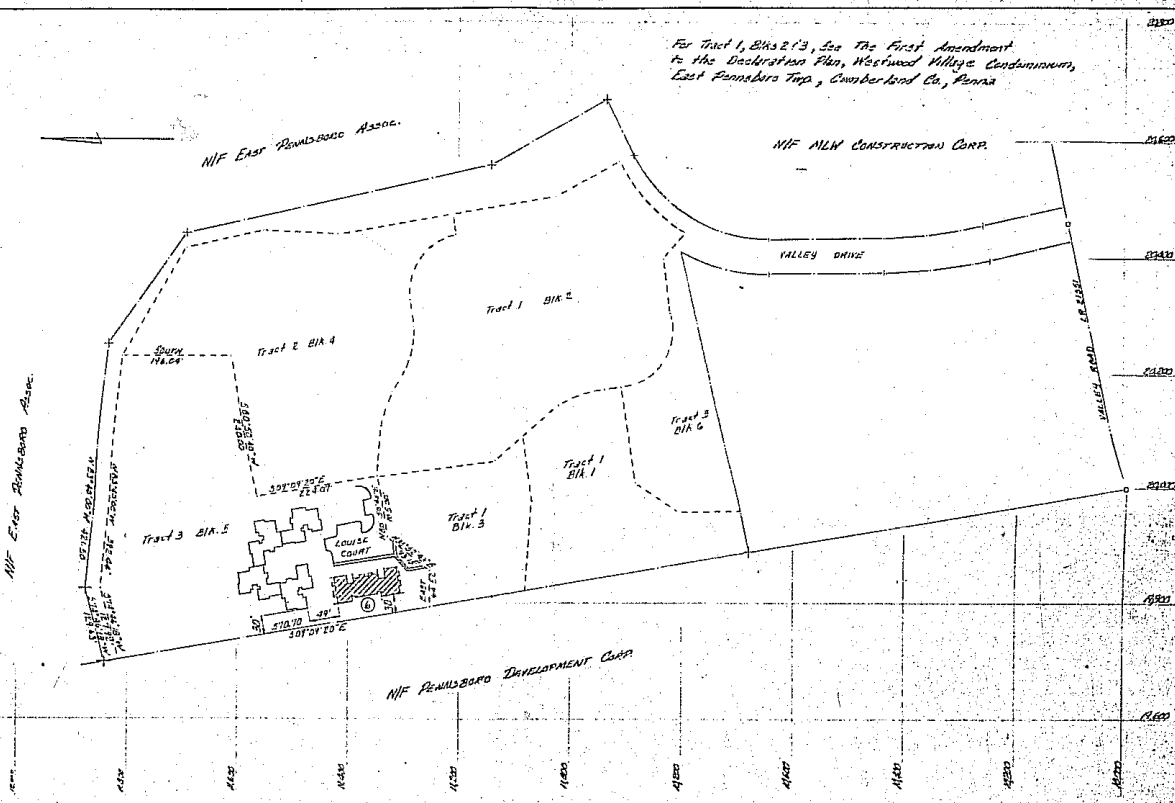
PI PL 33 A 33-E

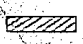
FLOOR PLAN

Sheet 6 of 6	SCALE 1/4"	DATE
Prepared By: Paul E. Graf Associates, Inc.	DESIGNED	DRAWN
New Cumberland, Penna.	CHECKED	DATE
	APPROVED	15-10-63

KE ENGINEERS ARCHITECTS

For Tract 1, Bks 2 & 3, See The First Amendment to the Declaration Plan, Westwood Village Condominiums, East Pennsboro Twp, Cumberland Co., Penna.



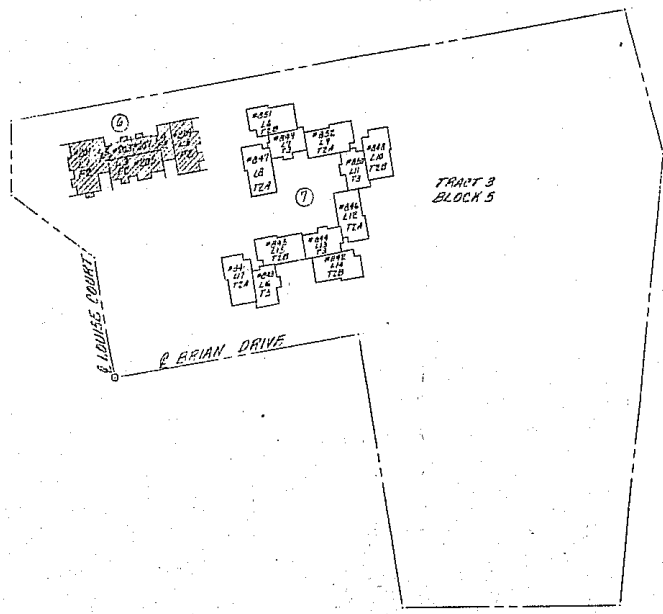
 Building covered under previous Amendment to the Declaration Plan



INDEX MAP	
Sheet 2 of 5	SCALE 1/8" = 1'-0"
Prepared By: Paul E. Grotz & Associates, Inc.	
New Cumberland, Penna.	
DATE: 07-19-77	PROJECT NO: 15-107

H. E. ALLEN & SONS
ARCHITECTS & ENGINEERS





TRACT 3
BLOCK 5

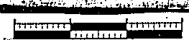
LOUISE COURT

BRIAN DRIVE

PLAN OF BUILDINGS
LOCATED ON TRACT 3



BUILDING IDENTIFICATION KEY SHEET			
Sheet 3 of 8	Scale 1"=50'	Project	
Prepared By Paul E. Grant, Assoc. Inc. New Cumberland, Penna.			
Date Jun 5 1971	Drawn By BE 34	Project No. 100-B	Sheet No. 15-107



BUILDING ADDRESS AND ELEVATIONS INDEX							
BUILDING NUMBER	BLOCK NUMBER	UNIT DESIGNATION AND POST OFFICE ADDRESS	FLOOR PLAN NUMBER	ELEVATIONS			
				1ST FLOOR	1ST FL. CEIL.	2ND FLOOR	END FL. CEIL.
⑦	5	841, LOUISE CT., SUITE AB-117	15-107.5	457.52	465.64	—	—
		842, BRIAN DR.	114	457.52	467.63	—	—
		843, LOUISE CT.	116	457.52	465.64	466.41	474.57
		844, BRIAN DR.	113	458.52	467.63	468.41	476.51
		845, LOUISE CT.	115	457.52	465.64	—	—
		846, BRIAN DR.	112	458.52	467.63	—	—
		847, LOUISE CT.	108	458.17	466.23	—	—
		848, BRIAN DR.	110	468.20	468.30	—	—
		849, LOUISE CT.	107	458.17	466.23	467.08	475.44
		850, BRIAN DR.	111	468.20	468.30	469.13	477.23
		851, LOUISE CT.	106	458.17	466.23	—	—
⑦	5	852, BRIAN DR., SUITE AB-107	15-107.5	468.20	468.30	—	—

LEGEND

- T - Tri-Plex
- L - Construction Identification
- ⑦ - Building Complex Number
- T2 - Two Bedroom Tri-Plex
- L17 - Dwelling Ab. 17 with Const. I.D. - L
- SUITE - Sub-Section of Unit Designation

INDEX	
BLOCK 5 - BUILDING 1	
UNIT NUMBER	FLOOR PLAN NUMBER
#841 L17-T2A	15-107.5
#842 L14-T2B	
#843 L16-T3	
#844 L18-T3	
#845 L15-T2B	
#846 L12-T2A	
#847 L8-T2A	
#848 L10-T2B	
#849 L7-T3	
#850 L11-T3	
#851 L6-T2B	
#852 L9-T2A	15-107.5

TOTAL CONTENTS

- 8 Units with 2 bedrooms
- 4 Units with 3 bedrooms
- 12 Units Total



BUILDING ADDRESS AND ELEVATIONS INDEX

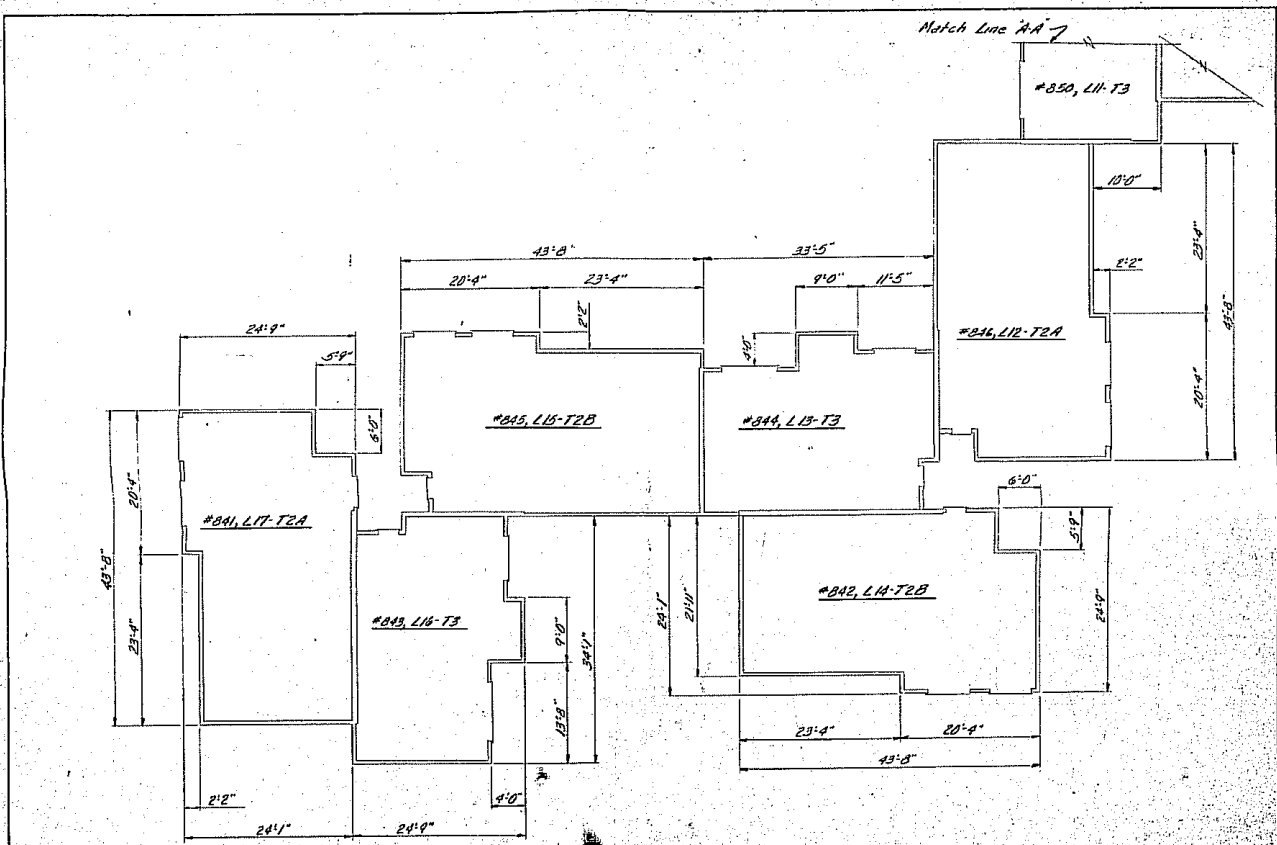
Sheet 4 of 8

Scale: 6"=10'

Prepared by: Paul E. Bradford, Assoc. Eng. New Cumberland, Penna.

Date: 12-9-85

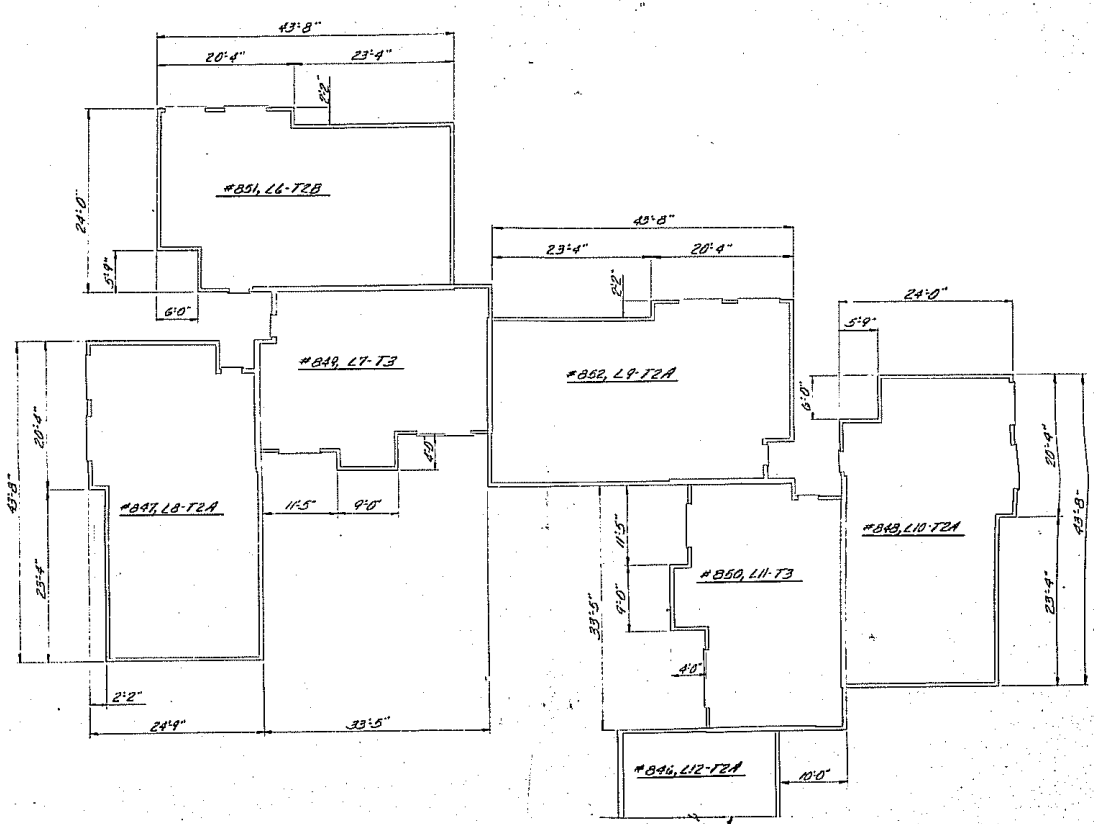
Plan Number: 15-107.5



TRIPLEX, FIRST FLOOR



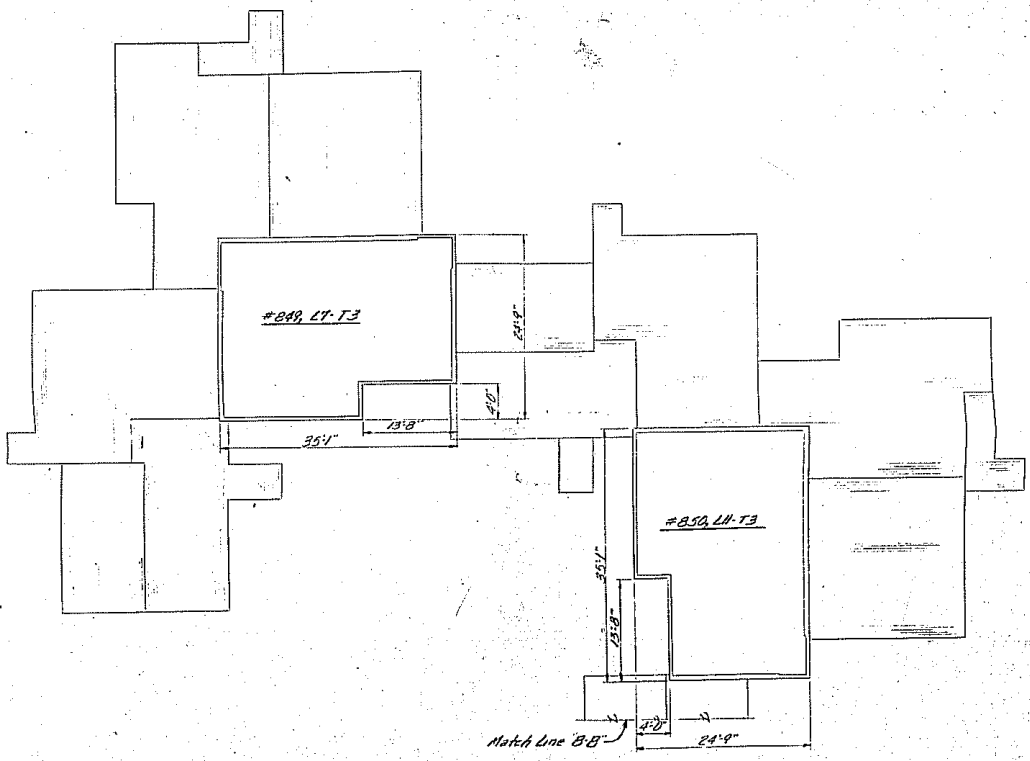
FLOOR PLAN	
Sheet 5 of 8	Date: 3/4/0
Prepared by: Paul E. Brock & Assoc., Inc.	For: New Cumberland, North Carolina
Date: JAN 5 1999	Plan Number: 15-1015



TRI-PLEX, FIRST FLOOR Match Line A-A



FLOOR PLAN	
Sheet 6 of 8	Scale: 1/8" = 1'-0"
Prepared by: Paul E. Graf & Assoc., Inc. New Canaan, Conn.	
Date: Jan 5, 1975	Plan Number: 15-1075



TRI- PLEX, SECOND FLOOR



FLOOR PLAN	
Sheet 7 of 8	Scale: 1/8" = 1'-0"
Prepared by: Paul E. Bradford, Assoc., Inc. New Cumberland, Virginia	
Date: Jan 5, 1974	Plan Number: 15-1075

Not to Scale: 1/8" = 1'-0"

*846, L12-T2A

35'-1"

13'-8"

*844, L15-T3

*843, L16-T3

35'-1"

4'-0"

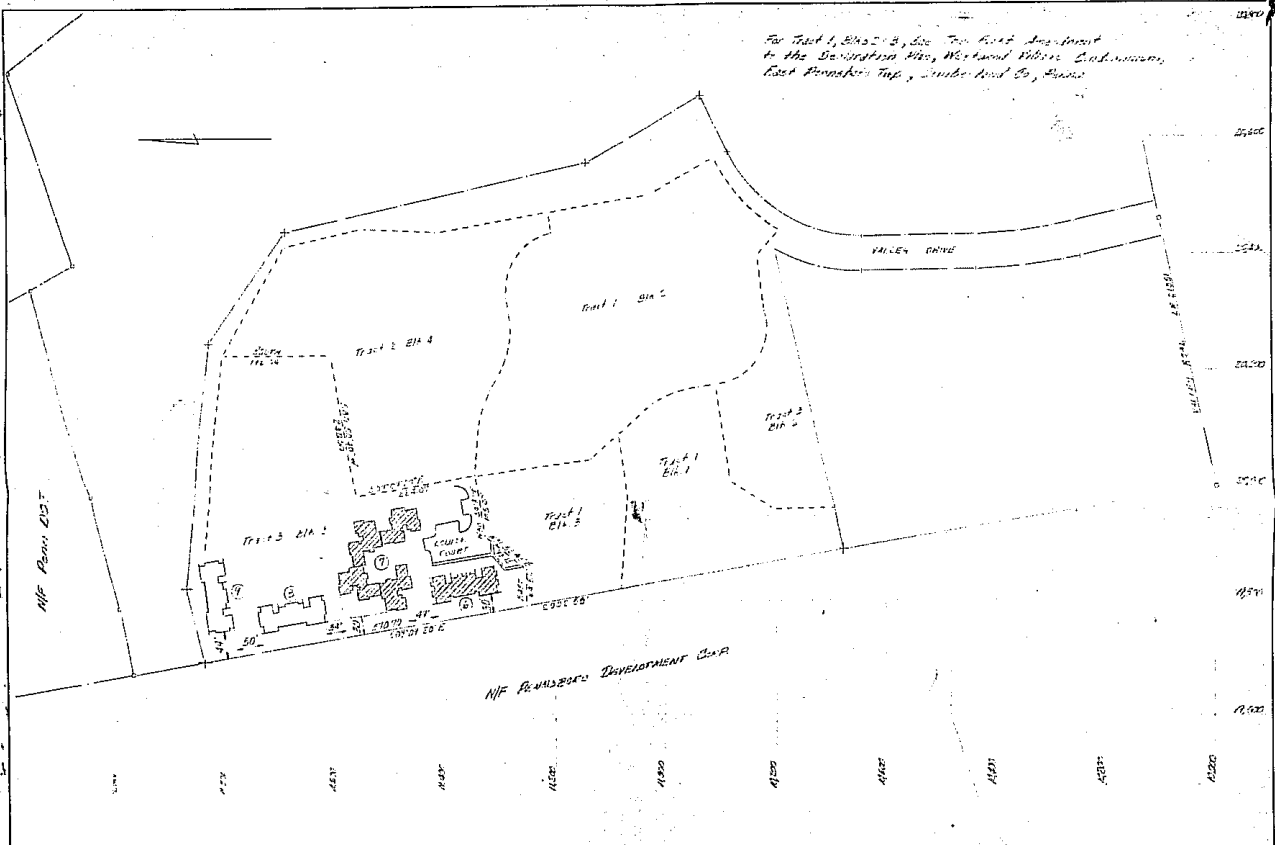
24'-9"

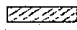
TRI-PLEX, SECOND FLOOR



FLOOR PLAN	
Sheet 8 of 8	Scale: 1/8" = 1'-0"
Prepared by: Paul E. Gire & Assoc., Inc. New Chamberland, Virginia	
Date: Jan 5, 1975	Plan Number: 15-1075

For Tract 1, Block 2, Site Two East, see front to the Washington Ave, Westwood Village Condominium, East Franklin Top, Under Land Co, Evans



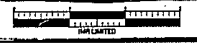
 Building covered under previous Amendment to the Declaration Map

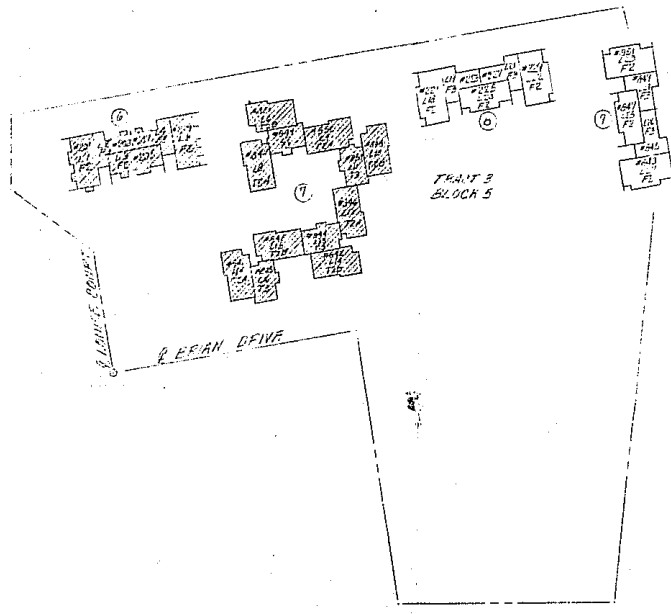


FOURTH AMENDMENT	
INDEX MAP	
Sheet 2 of 5	NO. 11180
Prepared by: WILLIAM E. REYNOLDS, ETC.	DATE: FEB
Now Amended. Run 2	
DATE: MAR 12, 1977	15-1073

02503A

10E STANDARD 210 SIZE UNIFORMED SPANNING FORM





PLAN OF BUILDING
LOCATED ON TRACT #3.

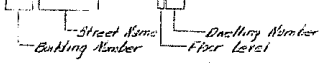


FOURTH AMENDMENT	
BUILDING IDENTIFICATION KEY SHEET	
Sheet 3 of 5	DATE 1-5-58
Prepared By: Paul G. Grant, Assoc. Eng.	DESIGNED BY: JEB
New Campbell, Penna.	REVISION
APPROVED BY: [Signature]	EXPIRES: 15-10-73

pl 3593-B



BUILDING ADDRESS AND ELEVATIONS INDEX					ELEVATIONS			
BUILDING NUMBER	BLOCK NUMBER	UNIT DESIGNATION AND POST OFFICE ADDRESS	FLOOR PLAN NUMBER	1st Floor	1st Floor	2nd Floor	3rd Floor	
②	5	221, Brian Dr., Suite 116	15-1073	461.85	461.93	---	---	
		223	114	463.75	471.15	471.95	480.05	
		225	123	463.65	471.15	---	---	
▼		227	121	463.15	471.15	471.95	480.05	
②		229	122	463.05	471.15	---	---	
②		B51	123	463.00	471.10	---	---	
		B49	124	463.00	471.10	471.90	480.00	
		B47	125	463.00	471.10	---	---	
▼	▼	B45	126	463.00	471.10	471.90	480.00	
②	5	B43, Brian Dr., Suite 127	15-1073	463.00	471.10	---	---	



- LEGEND**
- F - Fire Floor
 - L - Construction Identification
 - ② - Building Complex Number
 - F2 - Two Bedroom Fire-Floor
 - 116 - Dwelling No. 11 with Const ID L
 - SUITE - Sub Section of Unit Designation

INDEX	
UNIT NUMBER	FLOOR PLAN NUMBER
#221	116-F2
#223	114-F3
#225	120-F2
#227	121-F3
#229	122-F2
#B51	123-F2
#B49	124-F3
#B47	125-F2
#B45	126-F3
#B43	127-F2

TOTAL CONTENTS

6 Units with 2 bedrooms
4 Units with 3 bedrooms
12 Units Total

FOURTH AMENDMENT
BUILDING ADDRESS AND ELEVATIONS INDEX

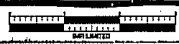
Sheet 4 of 5

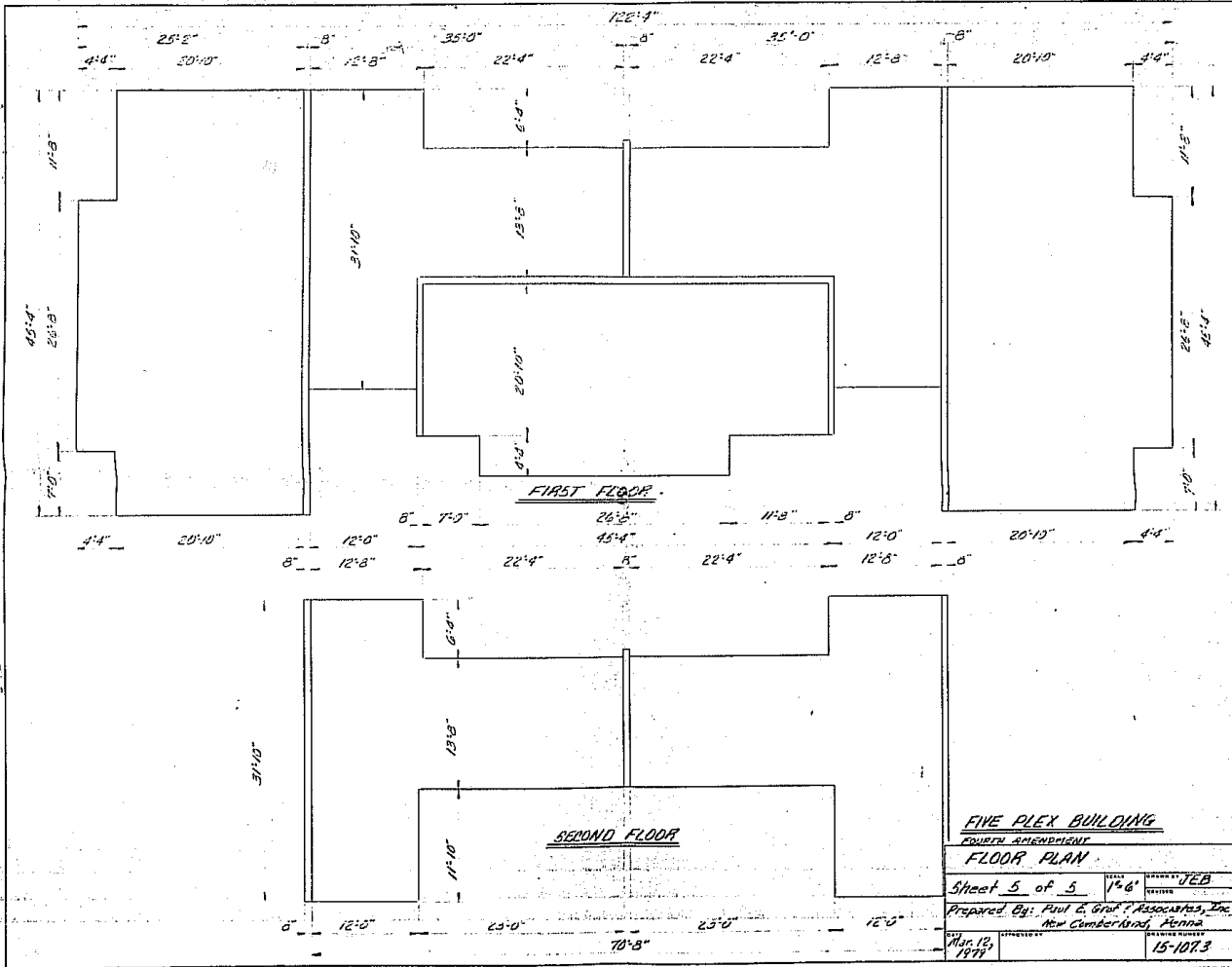
Prepared by: Paul E. Graf & Assoc.
New Canaan, Conn.

Nov 12 1973

15-1073

13030





HEATSEALERS STANDARDS

UNLIMITED

RECEIVED
10:53 AM
JAN 26 1987
CUMBERLAND COUNTY
PLANNING DEPARTMENT

THE SIXTH AMENDMENT
TO
DECLARATION PLAN

WESTWOOD VILLAGE CONDOMINIUM
EAST PENNSBORO TOWNSHIP
CUMBERLAND COUNTY, PENNSYLVANIA

CONDOMINIUM DECLARATION
I, the undersigned, do hereby certify that the following is a true and correct copy of the Declaration of Condominium for the Westwood Village Condominium, as shown on the attached Declaration Plan, and that the same has been duly recorded in the Office of the Recorder of Deeds, Cumberland County, Pennsylvania, on this 26th day of January, 1987.

I, the undersigned, do hereby certify that the following is a true and correct copy of the Declaration Plan for the Westwood Village Condominium, as shown on the attached Declaration Plan, and that the same has been duly recorded in the Office of the Recorder of Deeds, Cumberland County, Pennsylvania, on this 26th day of January, 1987.

STATE OF PENNSYLVANIA
COUNTY OF CUMBERLAND
I, the undersigned, do hereby certify that the following is a true and correct copy of the Declaration Plan for the Westwood Village Condominium, as shown on the attached Declaration Plan, and that the same has been duly recorded in the Office of the Recorder of Deeds, Cumberland County, Pennsylvania, on this 26th day of January, 1987.

STATE OF PENNSYLVANIA
COUNTY OF CUMBERLAND
I, the undersigned, do hereby certify that the following is a true and correct copy of the Declaration Plan for the Westwood Village Condominium, as shown on the attached Declaration Plan, and that the same has been duly recorded in the Office of the Recorder of Deeds, Cumberland County, Pennsylvania, on this 26th day of January, 1987.

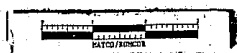
STATE OF PENNSYLVANIA
COUNTY OF CUMBERLAND
I, the undersigned, do hereby certify that the following is a true and correct copy of the Declaration Plan for the Westwood Village Condominium, as shown on the attached Declaration Plan, and that the same has been duly recorded in the Office of the Recorder of Deeds, Cumberland County, Pennsylvania, on this 26th day of January, 1987.



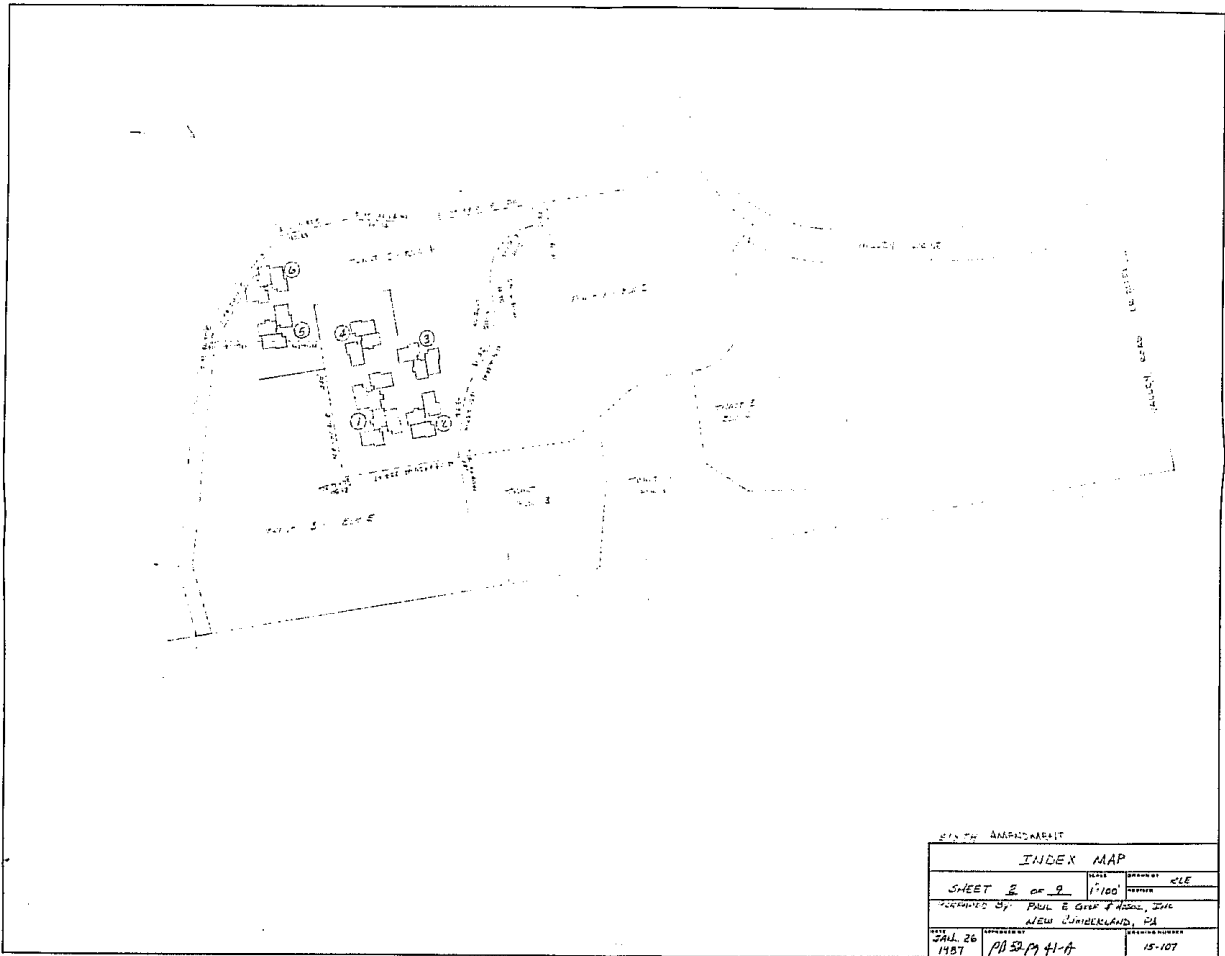
PLANS PREPARED BY
PAUL E. GROF & ASSOCIATES, INC.
CONSULTING ENGINEERS
NEAR CUMBERLAND, PENNSYLVANIA
J. A. B. [Signature]
REG. PROF. ENGINEER
JANUARY 26, 1987

See Original Plans See Plan Book 26 page 15

Plan Book 52 page 41

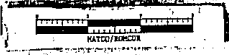


BK - 52 PG - 41

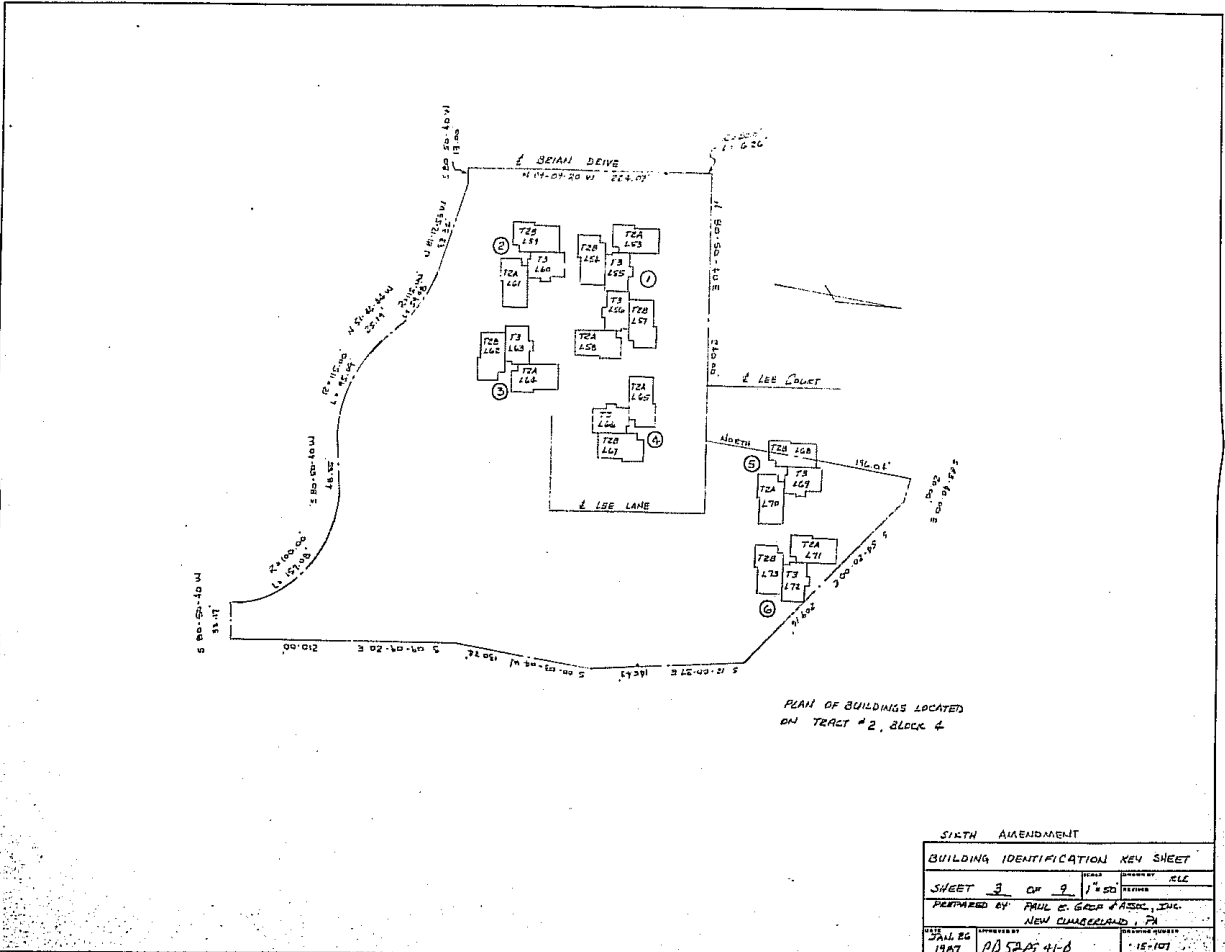


SEE THE AGREEMENT

INDEX MAP		
SHEET 2 of 2	SCALE 1"=100'	DATE 11-10-57
DRAWN BY: PAUL E. GIBBS & ASSOC., INC.		
NEW LINDSEYLAND, PA		
DATE: JUL 26 1957	PROJECT: 711 52 PG 41-A	DRAWING NUMBER: 15-107



BK - 52 PG - 41 A



PLAN OF BUILDINGS LOCATED ON TRACT # 2, BLOCK 4

SIXTH AMENDMENT			
BUILDING IDENTIFICATION KEY SHEET			
SHEET 3	OF 9	1/4" = 20'	SCALE ALL
PERFORMED BY PAUL C. GARD ASSOC. INC.			
NEW ORLEANS, LA			
DATE 12/15/87	PROJECT 00 52 PG 41-B	REVISION 15-101	

BK - 52 | PG - 41 B

BUILDING ADDRESS AND ELEVATION INDEX				ELEVATIONS			
BUILDING NUMBER	BLOCK NUMBER	UNIT DESIGNATION AND POST OFFICE ADDRESS	FLOOR PLAN NUMBER	1 st FLOOR	1 st FLOOR CEILING	2 nd FLOOR	2 nd FLOOR CEILING
7	4	Lot No 53	15-107-G	455.0	463.1	—	—
		54			463.1	—	—
		55			463.1	464.0	472.1
		56			463.1	464.0	472.1
		57			463.1	—	—
7		58		455.0	463.1	—	—
2		59		453.0	461.1	—	—
		60			461.1	462.0	470.1
2		61		453.0	461.1	—	—
3		62		451.0	459.1	—	—
		63			459.1	460.0	468.1
3		64		451.0	459.1	—	—
4		65		453.0	461.1	—	—
		66		453.0	461.1	462.0	470.1
4		67		453.0	461.1	—	—
5		68		453.0	461.1	—	—
		69		453.0	461.1	462.0	470.1
5		70		452.0	460.1	—	—
6		71		467.0	455.1	—	—
		72			455.1	456.0	464.1
6		Lot No 73	15-107-G	447.0	455.1	—	—

INDEX	
TRACT 2 - BLOCK 4 - BUILDINGS 123,4,5,6	FLOOR PLAN NUMBER
- 103 - 72A	15-107-G
- 104 - 72B	
- 105 - 73	
- 106 - 73	
- 107 - 72B	
- 108 - 72A	
- 109 - 72B	
- 110 - 73	
- 111 - 72A	
- 112 - 72B	
- 113 - 73	
- 114 - 72A	
- 115 - 72A	
- 116 - 73	
- 117 - 72B	
- 118 - 73	
- 119 - 72A	
- 120 - 73	
- 121 - 72B	15-107-G

SIXTH AMENDMENT
 BUILDING ADDRESS AND ELEVATION INDEX

SHEET 6 OF 2

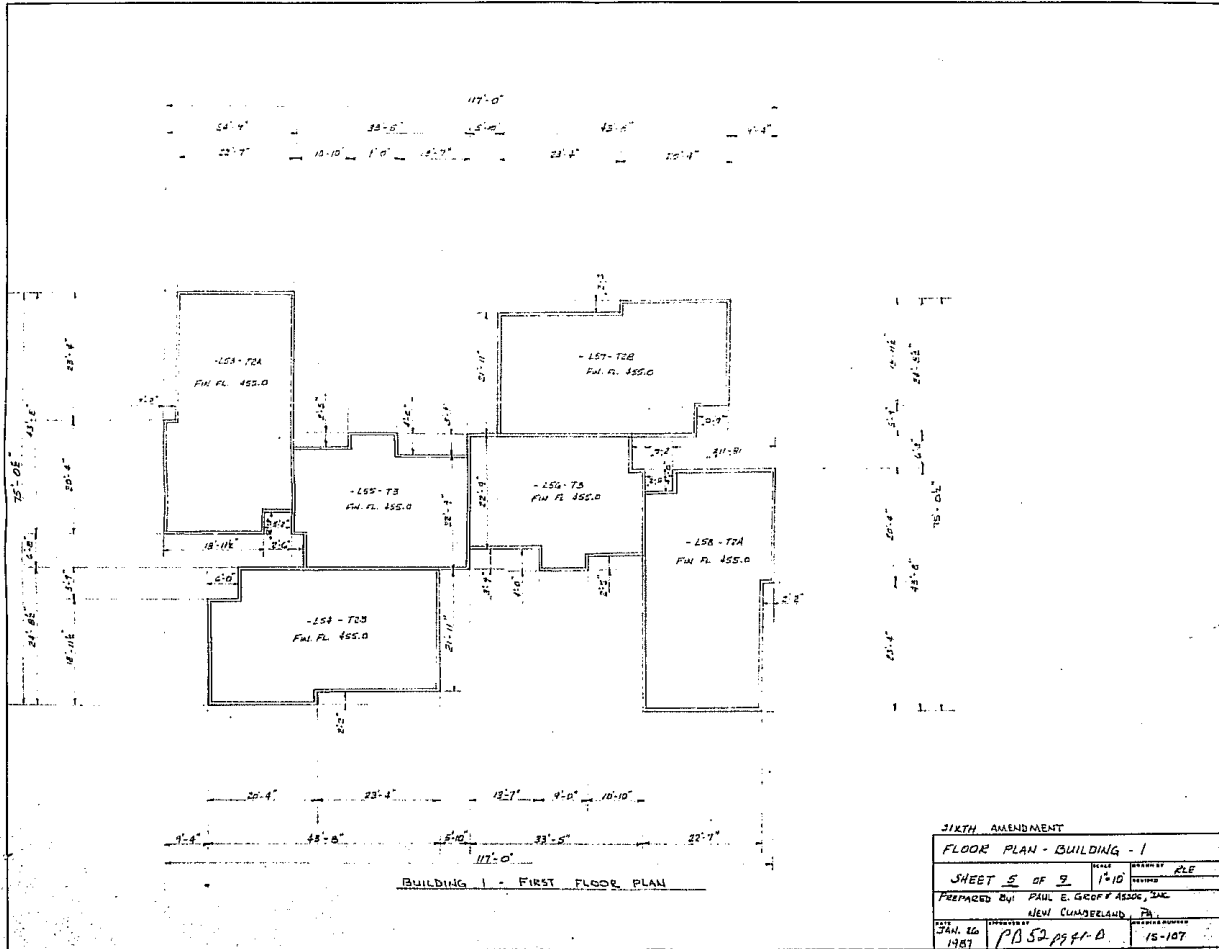
PREPARED BY: PAUL E. GIBB & ASSOC., INC.
 NEW QUANTICO, VA.

JAN 26 1987

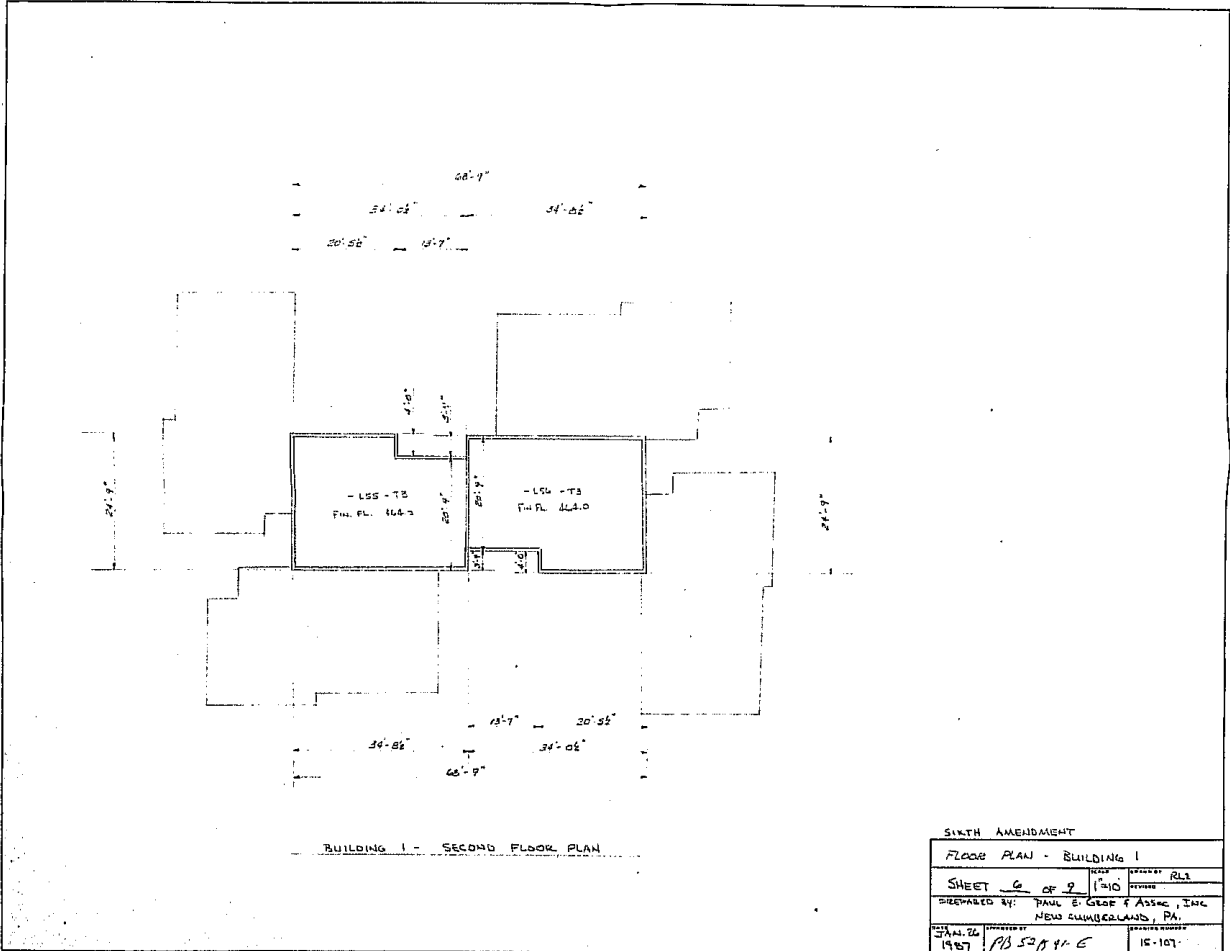
PROJECT: PB 59 B-41-C

DATE PLOTTED: 15-107

BK - 52 | PG - 41 | C



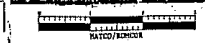
BK - 52 PG - 41 D



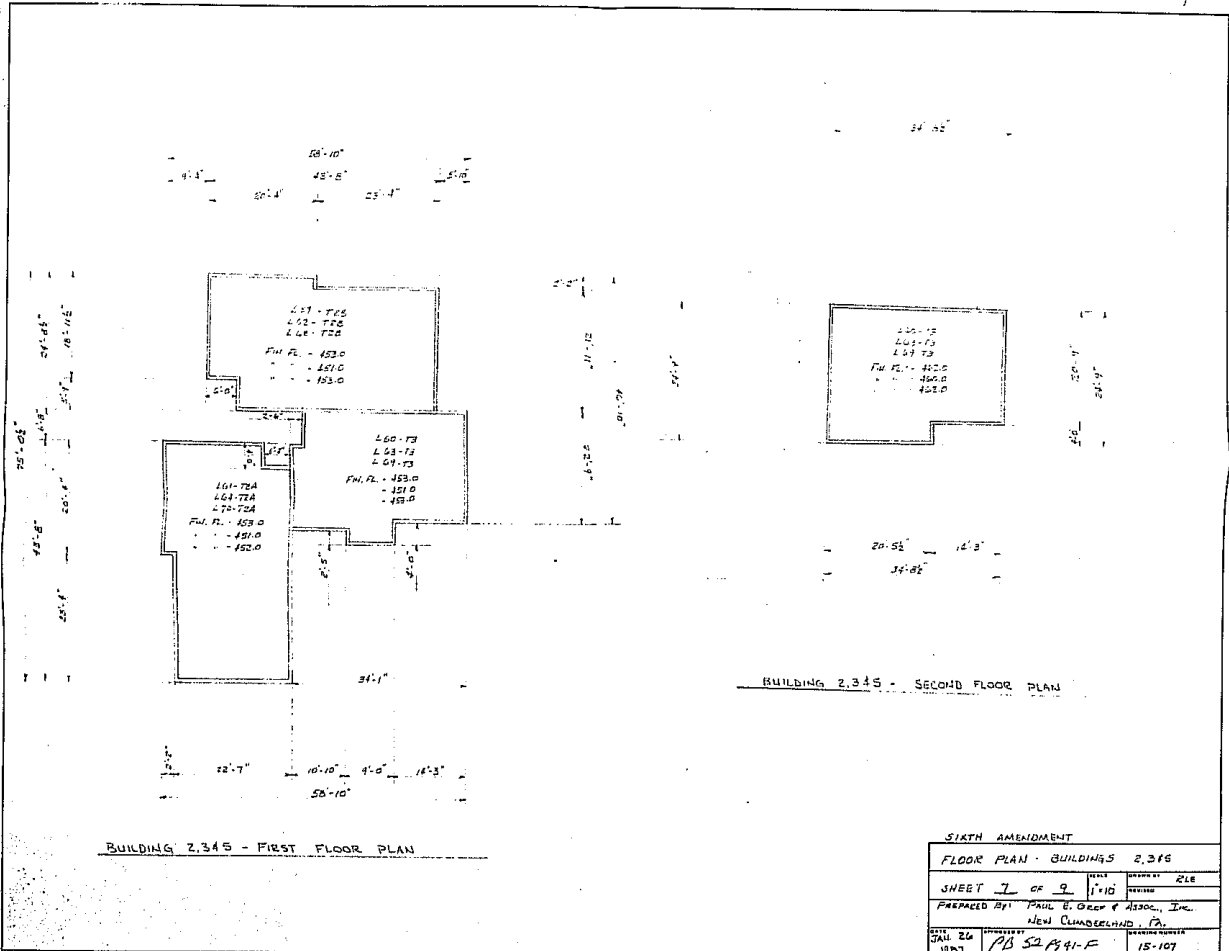
BUILDING 1 - SECOND FLOOR PLAN

SIXTH AMENDMENT			
FLOOR PLAN - BUILDING 1			
SHEET 6	OF 9	SCALE 1"=10'	APPROVED RLS
PREPARED BY: PAUL E. GEORGE ASSOC., INC. NEW HAMBURG, PA.			
DATE: 11-26-1987	PROJECT: P3 52B 4-6	15-107	

NE



BK-52 PG-41 E

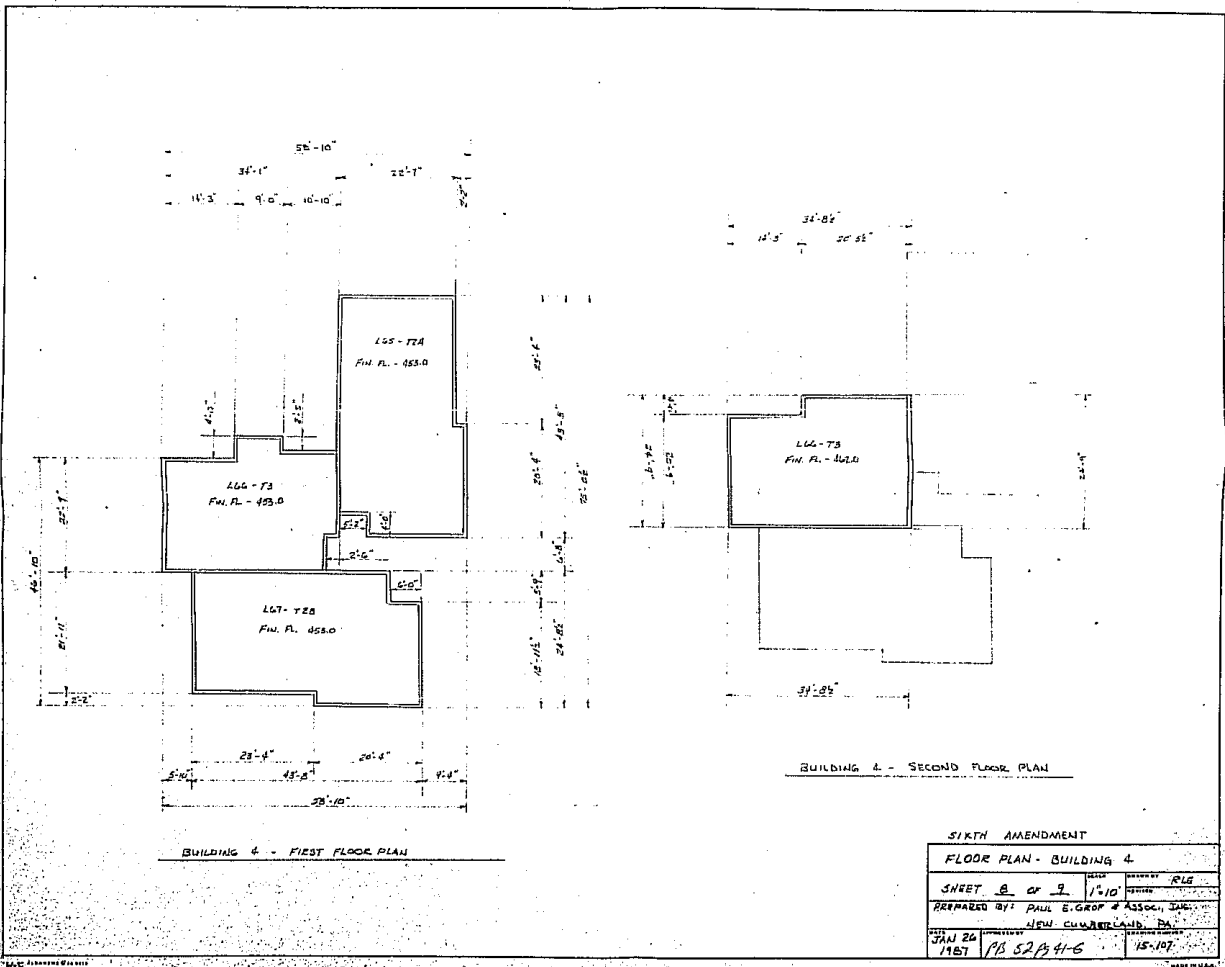


BUILDING 2,345 - FIRST FLOOR PLAN

BUILDING 2,345 - SECOND FLOOR PLAN

SIXTH AMENDMENT			
FLOOR PLAN - BUILDING 2,345			
SHEET 7	OF 9	SCALE 1"=10'	DATE 2/8
PREPARED BY: PAUL E. GREEP & ASSOC., INC.			
NEW CLAMORELAND, PA.			
DATE 2/8	PROJECT NO. AB 52 PG 41-F	REVISION NO. 15-107	SCALE 1"=10'

BK - 52 PG - 41 F



BUILDING 4 - FIRST FLOOR PLAN

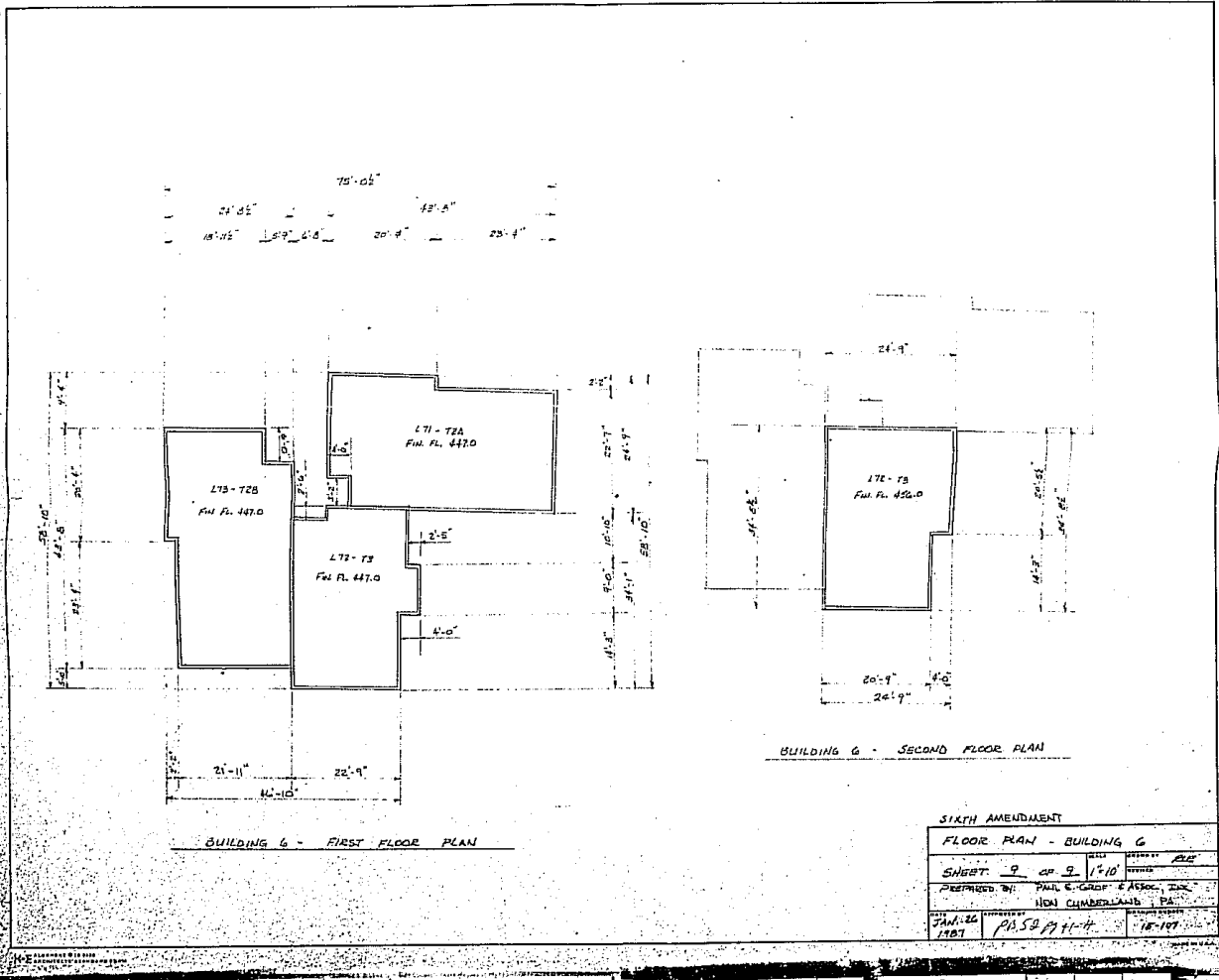
BUILDING 4 - SECOND FLOOR PLAN

SIXTH AMENDMENT

FLOOR PLAN - BUILDING 4	
SHEET 8 OF 9	SCALE 1/8" = 1'-0"
PREPARED BY: PAUL E. GROFF & ASSOCIATES, INC.	DATE: 15-107
JAN 24 1967	98 52 B 4-6



BK - 52 PG - 41 G

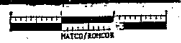


BUILDING G - FIRST FLOOR PLAN

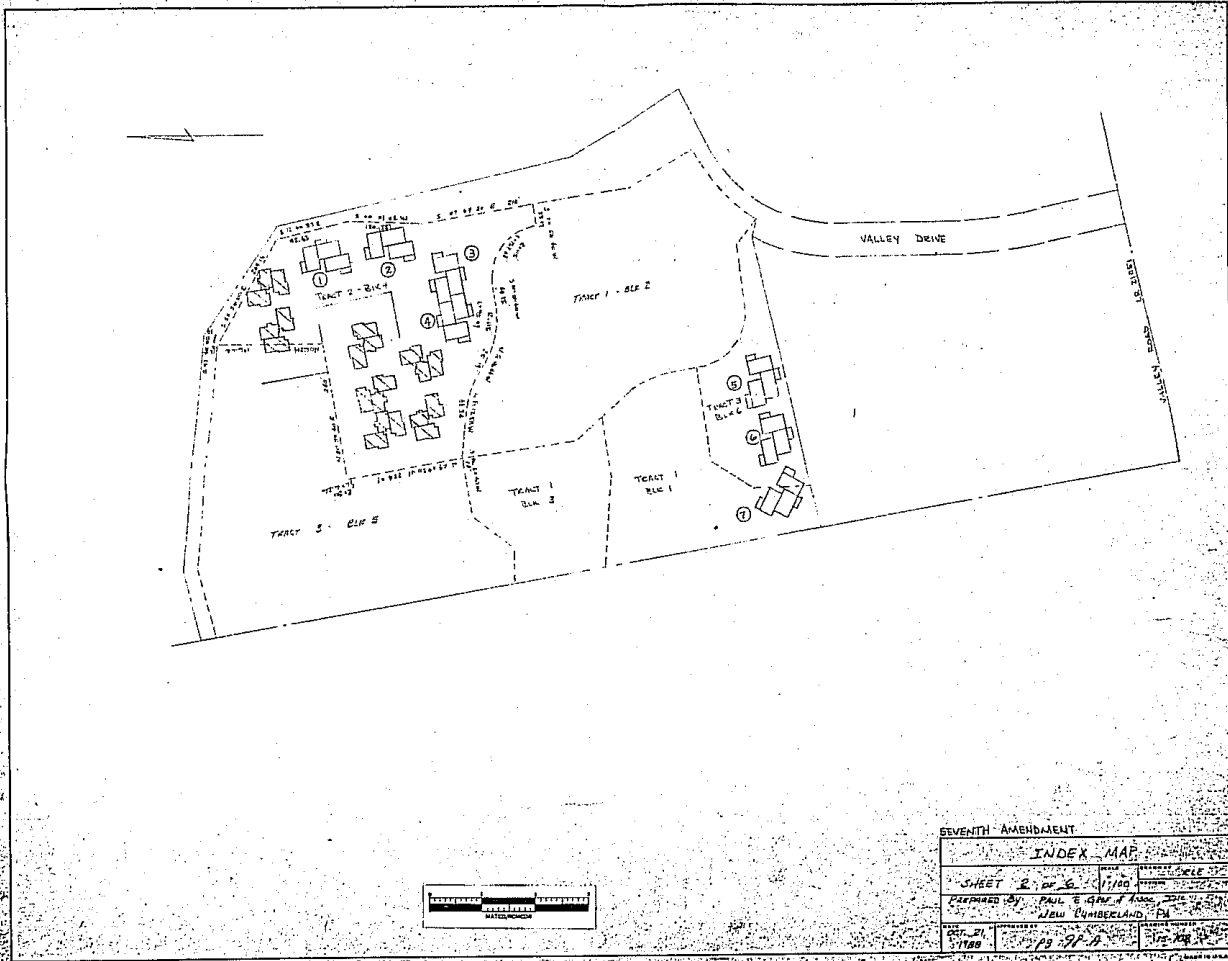
BUILDING G - SECOND FLOOR PLAN

SIXTH AMENDMENT

FLOOR PLAN - BUILDING G	
SHEET 9 of 9	SCALE 1"=10'
PREPARED BY: PAUL E. GROSS & ASSOC., INC.	NON-CUMBERLAND, PA.
JAN. 26 1987	PH. 587-9114

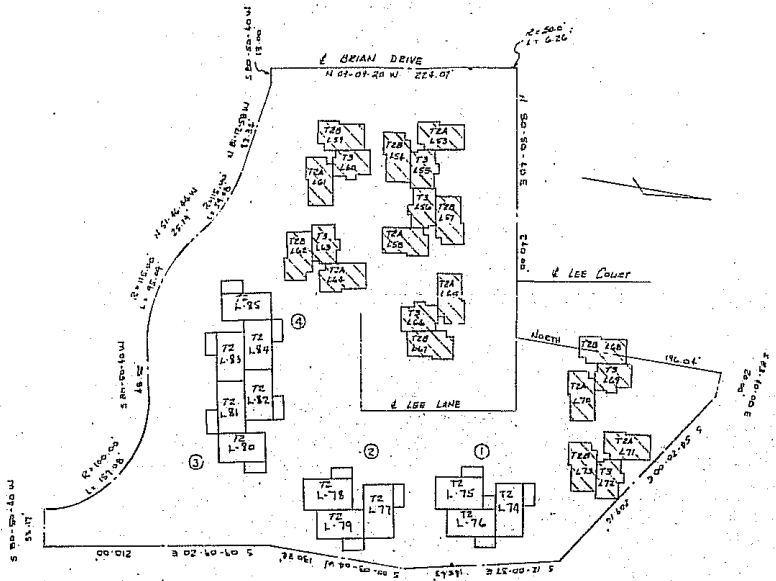


BK - 52 PG - 41 H



SEVENTH AMENDMENT	
INDEX MAP	
SHEET 2 OF 6	1180
PREPARED BY: PAUL E. GARDNER, JR., CIVIL ENGINEER	
NEW LUMBERLAND, PA.	
DATE: 5/18/80	PS 97-18

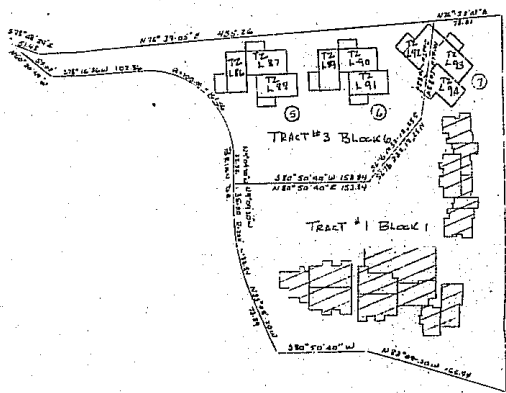
BK-56 PG-98A



PLAN OF BUILDINGS LOCATED ON TRACT # 2, BLOCK 4

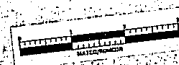
T2 - TRI PLEX, 2 BEDROOMS

SEVENTH AMENDMENT	
BUILDING IDENTIFICATION KEY SHEET	
SHEET NO. 3	OF 10
CERTIFIED BY: [Signature]	
DATE: 11/28/88	



PLAN OF BUILDINGS LOCATED ON
TRACT #1, BLOCK 1
TRACT #3, BLOCK 6

T2 - TRIPLEX, 2 BDRROOMS



SEVENTH AVENUE			
BUILDING IDENTIFICATION SHEET			
SHEET	1 OF 6	NO. 1000	SECTION 1, BLOCK 6
PREPARED BY: PAUL W. GOR & ASSOCIATES, INC.			
MINI CUMBERLAND, PA.			
DATE	1/15/55	BY: P.W.G.	SCALE: 1/4\"/>

BUILDING ADDRESS AND ELEVATION INDEX					
BUILDING NUMBER	BLOCK NUMBER	UNIT DESIGNATION AND POST OFFICE ADDRESS	FLOOR PLAN NUMBER	ELEVATIONS	
				1 st Floor	1 st FL CEILING
①	4	Lot No 74	15-108-6		
			75		
①			76		
②			77		
			78		
③			79		
③			80		
			81		
⑤			82		
④			83		
			84		
④	4		85		
⑤	6		86		
			87		
⑥			88		
⑥			89		
			90		
⑩	6		91		
⑦			92		
			93		
⑦		Lot No 74	15-108-6		

INDEX		
	UNIT NUMBER	FLOOR PLAN NUMBER
TRACT 2 Block 9	L74 T2	15-108-6
	L75 T2	
	L76 T2	
	L77 T2	
	L78 T2	
	L79 T2	
	L80 T2	
	L81 T2	
	L82 T2	
	L83 T2	
	L84 T2	
	L85 T2	
TRACT 3 Block 6	L86 T2	
	L87 T2	
	L88 T2	
	L89 T2	
	L90 T2	
	L91 T2	
TRACT 1 Block 1	L92 T2	
	L93 T2	
	L94 T2	15-108-6

SEVENTH AMENDMENT
 BUILDING ADDRESS AND ELEVATION INDEX

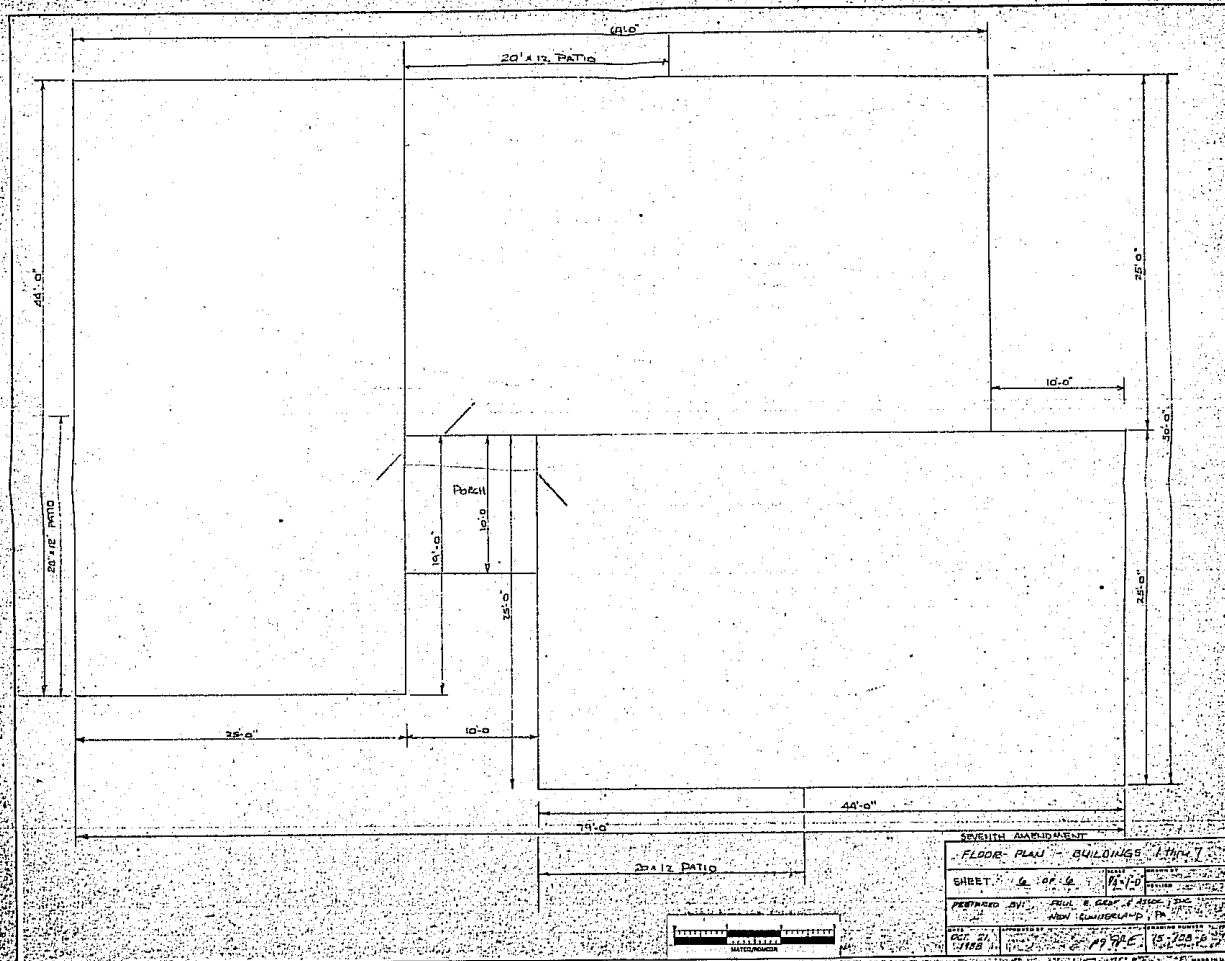
SHEET 5 OF 6

PREPARED BY: PAUL E. CLAY & ASSOCIATES, INC.
 1125 CUMBERLAND ST. PHOENIX, ARIZONA

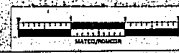
OCT 21 1988

1988 P.P.O. 15-108-6

BK - 56 PG - 98D



SEVENTH APARTMENT	
FLOOR PLAN - BUILDINGS 1, 1104, 7	
SHEET 1 OF 6	11-70
DESIGNED BY: PLU & GEAR, ARCHITECTS 1401 CLINGMAN RD. PH	
DATE: 1/18/56	15-208-8



BK - 56 PG - 98E

CORRECTED
SEVENTH AMENDMENT

TO

DECLARATION PLAN

WESTWOOD VILLAGE CONDOMINIUM

EAST PENNSBORO TOWNSHIP
CUMBERLAND COUNTY, PENNSYLVANIA

ARTICLE SEVENTH AMENDMENT TO DECLARATION PLAN -
WESTWOOD VILLAGE CONDOMINIUM

CONDOMINIUM CONTRACTING COMPANY, INCORPORATED, Developer

On January 21, 1978, the Declaration Plan of the Westwood Village Condominium was revised pursuant to the provisions of the said Declaration Plan, as amended, dated July 11, 1977, P.L. 1977-101, and the following amendments: 1977-101 and 1977-102.

1977-101 Declaration: Developer and Contractor (Contracting Company, Inc.) have agreed to amend the Declaration Plan of the Westwood Village Condominium, as amended, dated July 11, 1977, P.L. 1977-101, and the following amendments: 1977-101 and 1977-102.

1977-102 Declaration: Developer and Contractor (Contracting Company, Inc.) have agreed to amend the Declaration Plan of the Westwood Village Condominium, as amended, dated July 11, 1977, P.L. 1977-101, and the following amendments: 1977-101 and 1977-102.

1978, as amended by a First Amendment to Declaration Plan of Westwood Village Condominium dated July 11, 1977, and amended in the following manner: 1978-101 and 1978-102.

1978-101 Declaration: Developer and Contractor (Contracting Company, Inc.) have agreed to amend the Declaration Plan of the Westwood Village Condominium, as amended, dated July 11, 1977, P.L. 1977-101, and the following amendments: 1977-101 and 1977-102.

1978-102 Declaration: Developer and Contractor (Contracting Company, Inc.) have agreed to amend the Declaration Plan of the Westwood Village Condominium, as amended, dated July 11, 1977, P.L. 1977-101, and the following amendments: 1977-101 and 1977-102.

IN WITNESS WHEREOF, CONTRACTING COMPANY has caused this Declaration Plan to be signed and sealed this 15th day of October, 1978.

BY: *[Signature]*
CONTRACTING COMPANY

For Approval See Plan Book 26, Page 15

CONDOMINIUM OF WESTWOOD VILLAGE

COURT OF PENNSYLVANIA

IN WITNESS WHEREOF, I have hereunto set my hand and official seal this 21st day of October, 1978.

BY: *[Signature]*
DANIELA F. HEIDEL, Notary Public
Law Office, Inc., PA
100 Commonwealth Avenue, East, PA

The undersigned, a Registered Professional Engineer, in the Commonwealth of Pennsylvania, License No. 10101 of the State Board of Professional Engineers, has examined the Declaration Plan, consisting of a paper, fully and correctly (1) states the property, the location of the building thereon, the building and the layout of the floor of the building, including the walls and the common elements, and (2) set forth the name by which the property will be known, and the title designation for each unit therein.

[Signature]
DANIELA F. HEIDEL, Notary Public

CONDOMINIUM OF WESTWOOD VILLAGE

COURT OF PENNSYLVANIA

IN WITNESS WHEREOF, I have hereunto set my hand and official seal this 21st day of October, 1978.

BY: *[Signature]*
DANIELA F. HEIDEL, Notary Public
Law Office, Inc., PA
100 Commonwealth Avenue, East, PA

PLANS PREPARED BY
PAUL E. GROF & ASSOCIATES, INC.

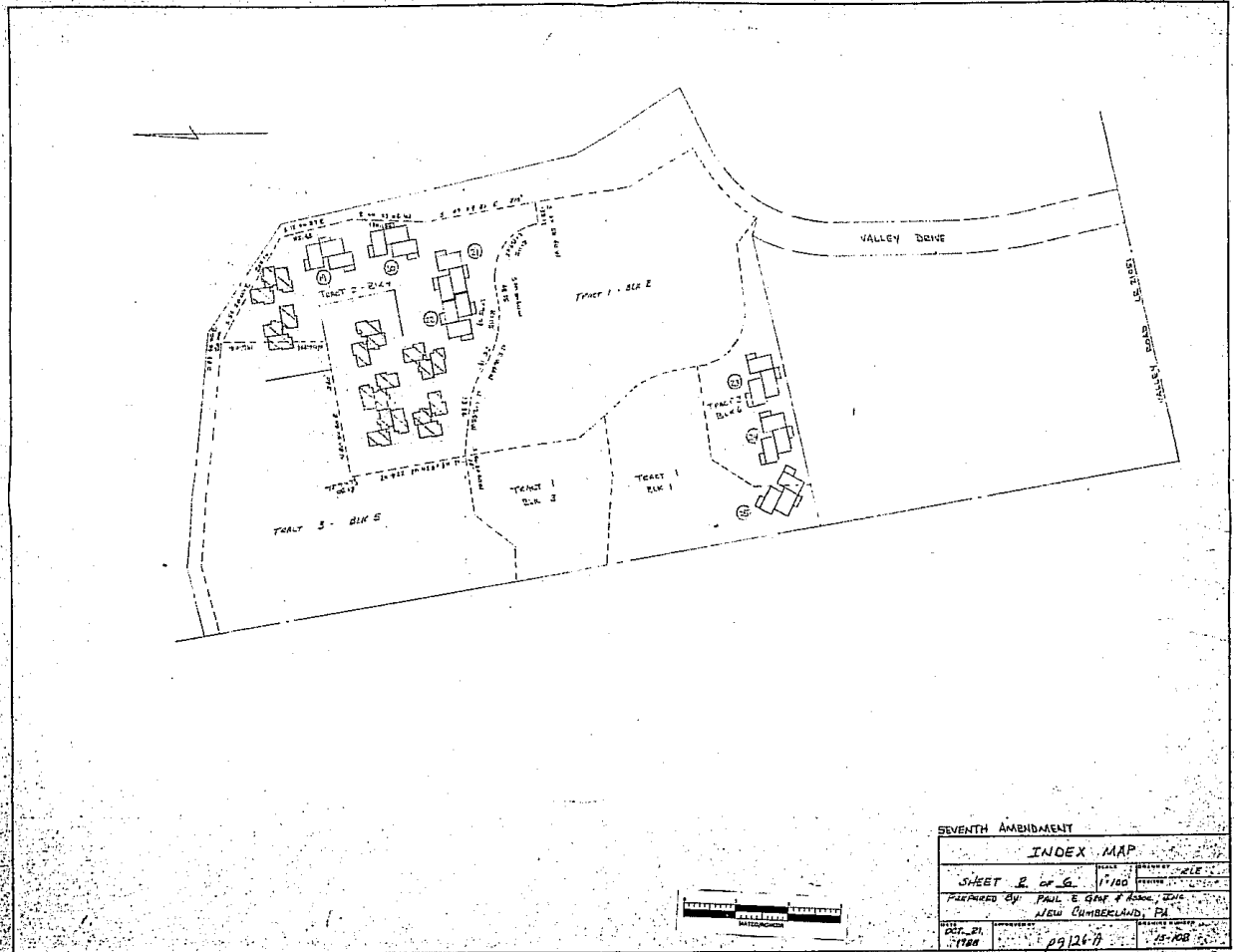
CONSULTING ENGINEERS
NEW CUMBERLAND, PENNSYLVANIA

[Signature]
REG. PROF. ENGINEER

OCTOBER 21, 1978

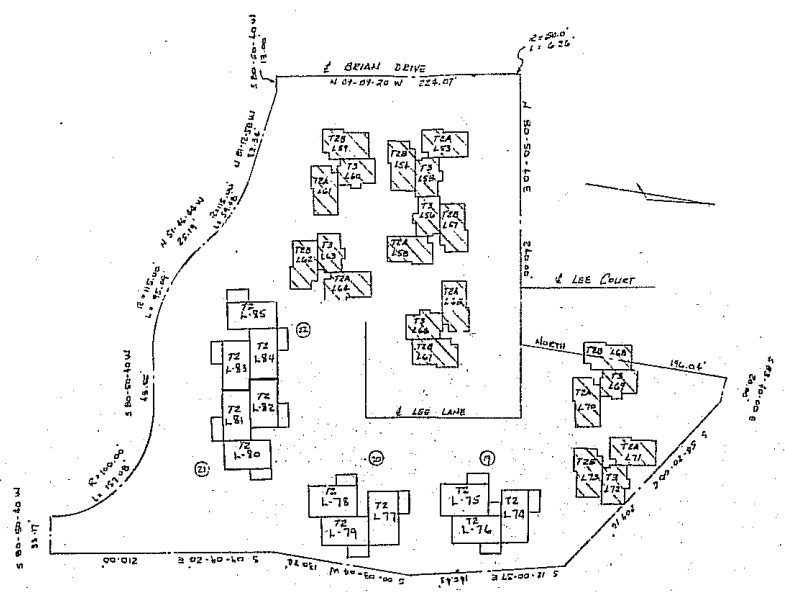
94 56 n126

BK-56 PG-126



SEVENTH AMBIDARSLEY	
INDEX MAP	
SHEET 2 of 6	SCALE 1"=100'
PREPARED BY PAUL E. GEE & ASSOC., INC.	
ALLEN, CUMBERLAND, PA	
DATE OCT. 21, 1988	PROJECT NO. 891267
DRAWN BY H-KB	

BK-56 PG-126A

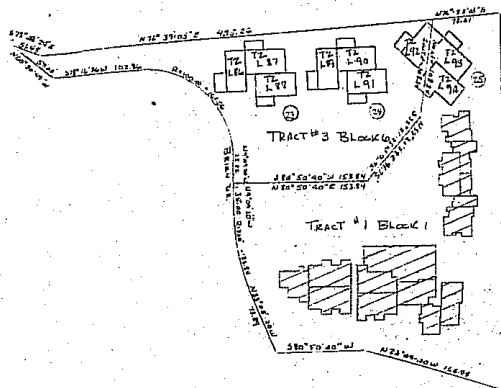


PLAN OF BUILDINGS LOCATED ON TRACT # 2, BLOCK 4

T2 - THRU, 2 BED ROOMS

SEVENTH AMENDMENT	
BUILDING IDENTIFICATION KEY SHEET	
SHEET 3 OF 6	DATE 1/1/80
PREPARED BY PAUL E. GENT & ASSOCIATES, INC.	
NEW ELMHURST, ILL.	
DATE 1/1/80	PROJECT # 19126 B





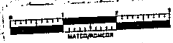
PLAN OF BUILDINGS LOCATED ON
TRACT #1, BLOCK 1
TRACT #3, BLOCK 6

T2 - TRIPLEX, 2 BEDROOMS

SEVENTH AMENDMENT			
BUILDING IDENTIFICATION KEY SHEET			
SHEET	4 OF 6	NO.	17-60
PREPARED BY	PAUL B. GEAR & ASSOC., INC. NEW CUMBERLAND, PA.		
DATE	OCT 21 1968	NO.	126C-126C-1

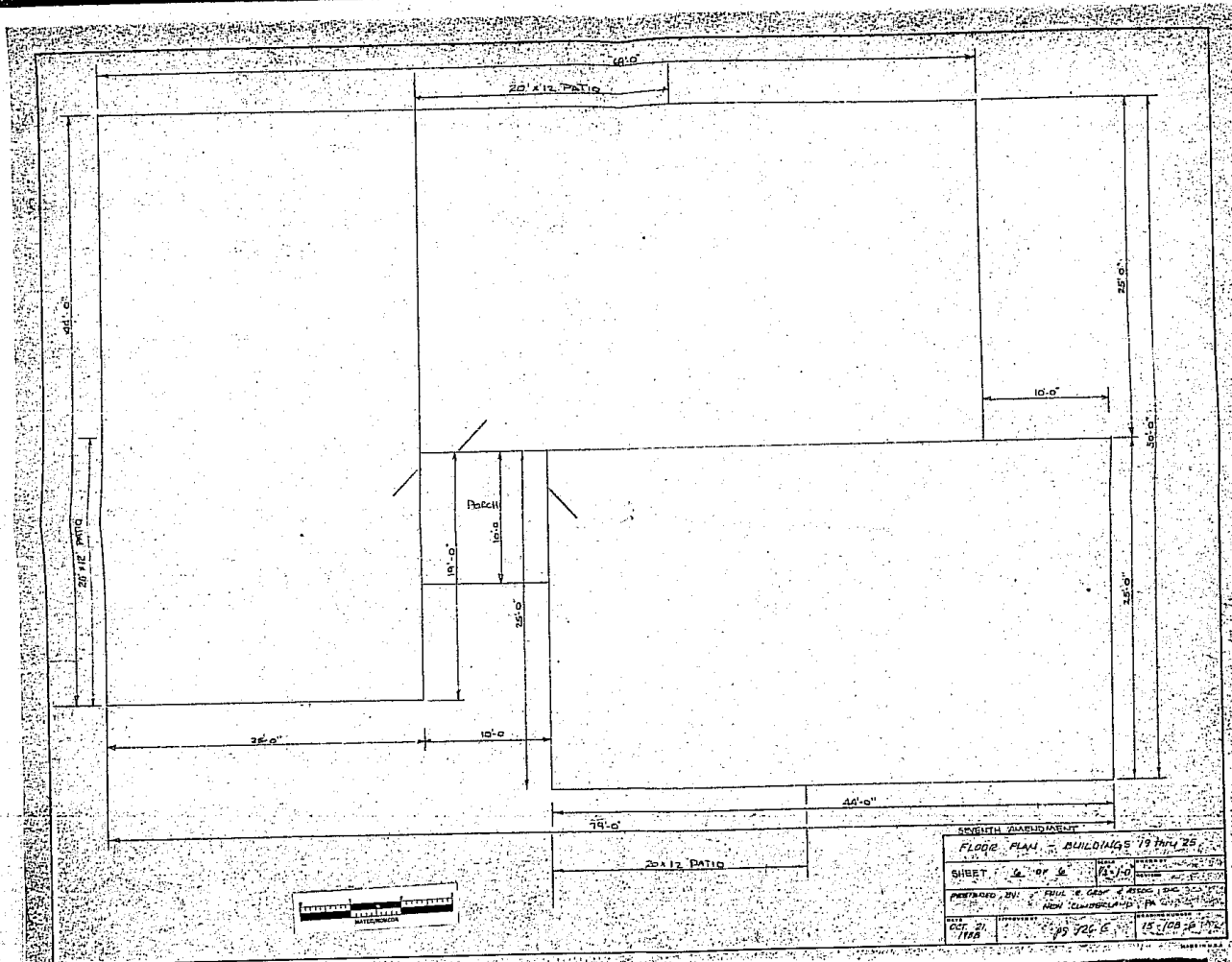
BUILDING ADDRESS AND ELEVATION INDEX					
BUILDING NUMBER	BLOCK NUMBER	UNIT DESIGNATION AND POST OFFICE ADDRESS	FLOOR PLAN NUMBER	ELEVATIONS	
				1 st FLOOR	1 st FL. CEILING
(15)	4	787 LEE LANE	74	15-103-6	
		783 LEE LANE	75		
(17)		795 LEE LANE	76		
(22)		791 LEE LANE	77		
		777 LEE LANE	78		
(26)		779 LEE LANE	79		
(21)		775 LEE LANE	80		
		773 LEE LANE	81		
(2)		771 LEE LANE	82		
(23)		83 CHARLOTTE WAY	83		
		833 CHARLOTTE WAY	84		
(24)	4	835 CHARLOTTE WAY	85		
(25)	6	840 MELISSA COURT	86		
(2)		842 MELISSA COURT	87		
		844 MELISSA COURT	88		
(2)		846 MELISSA COURT	89		
(2)		848 MELISSA COURT	90		
(2)	6	850 MELISSA COURT	91		
(2)	1 & 6	852 MELISSA COURT	92		
		854 MELISSA COURT	93		
(2)	1	856 MELISSA COURT	94	15-103-6	

INDEX		
	UNIT NUMBER	FLOOR PLAN NUMBER
TRACT 2 Block 4	L74 T2	15-103-6
" "	L75 T2	
" "	L76 T2	
" "	L77 T2	
" "	L78 T2	
" "	L79 T2	
" "	L80 T2	
" "	L81 T2	
" "	L82 T2	
" "	L83 T2	
" "	L84 T2	
" "	L85 T2	
TRACT 3 Block 6	L86 T2	
" "	L87 T2	
" "	L88 T2	
" "	L89 T2	
" "	L90 T2	
" "	L91 T2	
TRACT 3 Block 6 TRACT 1 Block 1	L92 T2	
TRACT 1 Block 1	L93 T2	
TRACT 1 Block 1	L94 T2	15-103-6



SEVENTH AMENDMENT
BUILDING ADDRESS AND ELEVATION INDEX

SHEET 2 OF 6	DATE	REVISION
PREPARED BY PAUL E. GARD & ASSOCIATES, INC.		
1000 CUMBERLAND, PA.		
DIST. 21, 1100	19 12-0	15-107



BK - 56 PG - 126E

SECOND CORRECTED
SEVENTH AMENDMENT

TO

DECLARATION PLAN

WESTWOOD VILLAGE CONDOMINIUM

EAST PENNSBORO TOWNSHIP
CUMBERLAND COUNTY, PENNSYLVANIA

SECOND CORRECTED SEVENTH AMENDMENT TO DECLARATION PLAN -
WESTWOOD VILLAGE CONDOMINIUM

CONSOLIDATED CONTRACTING COMPANY, INCORPORATED, hereinafter referred to as "CONTRACTOR",

1. On January 21, 1979, the declaration was on "Westwood Village Condominium" and recorded in the office of the Recorder of Deeds of Cumberland County, Pennsylvania, Book 213 at page 112.

2. On January 21, 1979, the declaration was on "Westwood Village Condominium" and recorded in the office of the Recorder of Deeds of Cumberland County, Pennsylvania, Book 213 at page 112.

3. On January 21, 1979, the declaration was on "Westwood Village Condominium" and recorded in the office of the Recorder of Deeds of Cumberland County, Pennsylvania, Book 213 at page 112.

4. On January 21, 1979, the declaration was on "Westwood Village Condominium" and recorded in the office of the Recorder of Deeds of Cumberland County, Pennsylvania, Book 213 at page 112.

5. On January 21, 1979, the declaration was on "Westwood Village Condominium" and recorded in the office of the Recorder of Deeds of Cumberland County, Pennsylvania, Book 213 at page 112.

6. On January 21, 1979, the declaration was on "Westwood Village Condominium" and recorded in the office of the Recorder of Deeds of Cumberland County, Pennsylvania, Book 213 at page 112.

7. On January 21, 1979, the declaration was on "Westwood Village Condominium" and recorded in the office of the Recorder of Deeds of Cumberland County, Pennsylvania, Book 213 at page 112.

1. On January 21, 1979, the declaration was on "Westwood Village Condominium" and recorded in the office of the Recorder of Deeds of Cumberland County, Pennsylvania, Book 213 at page 112.

2. On January 21, 1979, the declaration was on "Westwood Village Condominium" and recorded in the office of the Recorder of Deeds of Cumberland County, Pennsylvania, Book 213 at page 112.

3. On January 21, 1979, the declaration was on "Westwood Village Condominium" and recorded in the office of the Recorder of Deeds of Cumberland County, Pennsylvania, Book 213 at page 112.

4. On January 21, 1979, the declaration was on "Westwood Village Condominium" and recorded in the office of the Recorder of Deeds of Cumberland County, Pennsylvania, Book 213 at page 112.

5. On January 21, 1979, the declaration was on "Westwood Village Condominium" and recorded in the office of the Recorder of Deeds of Cumberland County, Pennsylvania, Book 213 at page 112.

6. On January 21, 1979, the declaration was on "Westwood Village Condominium" and recorded in the office of the Recorder of Deeds of Cumberland County, Pennsylvania, Book 213 at page 112.

7. On January 21, 1979, the declaration was on "Westwood Village Condominium" and recorded in the office of the Recorder of Deeds of Cumberland County, Pennsylvania, Book 213 at page 112.

8. On January 21, 1979, the declaration was on "Westwood Village Condominium" and recorded in the office of the Recorder of Deeds of Cumberland County, Pennsylvania, Book 213 at page 112.

CONSOLIDATED CONTRACTING COMPANY, INCORPORATED, hereinafter referred to as "CONTRACTOR",

1. On January 21, 1979, the declaration was on "Westwood Village Condominium" and recorded in the office of the Recorder of Deeds of Cumberland County, Pennsylvania, Book 213 at page 112.

2. On January 21, 1979, the declaration was on "Westwood Village Condominium" and recorded in the office of the Recorder of Deeds of Cumberland County, Pennsylvania, Book 213 at page 112.

3. On January 21, 1979, the declaration was on "Westwood Village Condominium" and recorded in the office of the Recorder of Deeds of Cumberland County, Pennsylvania, Book 213 at page 112.

4. On January 21, 1979, the declaration was on "Westwood Village Condominium" and recorded in the office of the Recorder of Deeds of Cumberland County, Pennsylvania, Book 213 at page 112.

5. On January 21, 1979, the declaration was on "Westwood Village Condominium" and recorded in the office of the Recorder of Deeds of Cumberland County, Pennsylvania, Book 213 at page 112.

6. On January 21, 1979, the declaration was on "Westwood Village Condominium" and recorded in the office of the Recorder of Deeds of Cumberland County, Pennsylvania, Book 213 at page 112.

7. On January 21, 1979, the declaration was on "Westwood Village Condominium" and recorded in the office of the Recorder of Deeds of Cumberland County, Pennsylvania, Book 213 at page 112.

I, the undersigned, a Registered Professional Engineer, in the Commonwealth of Pennsylvania, License No. 20809 do hereby certify that this Second Corrected Seventh Amendment to Declaration Plan, consisting of 4 pages, fully and accurately sets forth the property, the location of the building, the building and the layout of the building, including the units and the common elements, and all the facts the name by which the property will be known, and the said Declaration Plan as set forth herein.

Joseph A. Brown
REGISTERED PROFESSIONAL ENGINEER
COUNTY OF DAUPHIN

IN WITNESS WHEREOF, CONSOLIDATED CONTRACTING COMPANY HAS caused this Second Corrected Seventh Amendment to Declaration Plan to be executed this 23rd day of February, 1989.

CONSOLIDATED CONTRACTING COMPANY
L. H. ...

For Approval See Plan Book 26 page 15

REGISTERED PROFESSIONAL ENGINEER
DANIELA P. HENDEL, Henry PAE
Law, P.O. Box 100, PA
By Certificate Expires Dec. 31, 1989

Box 57 1989

PLANS PREPARED BY
PAUL E. GROF & ASSOCIATES, INC.

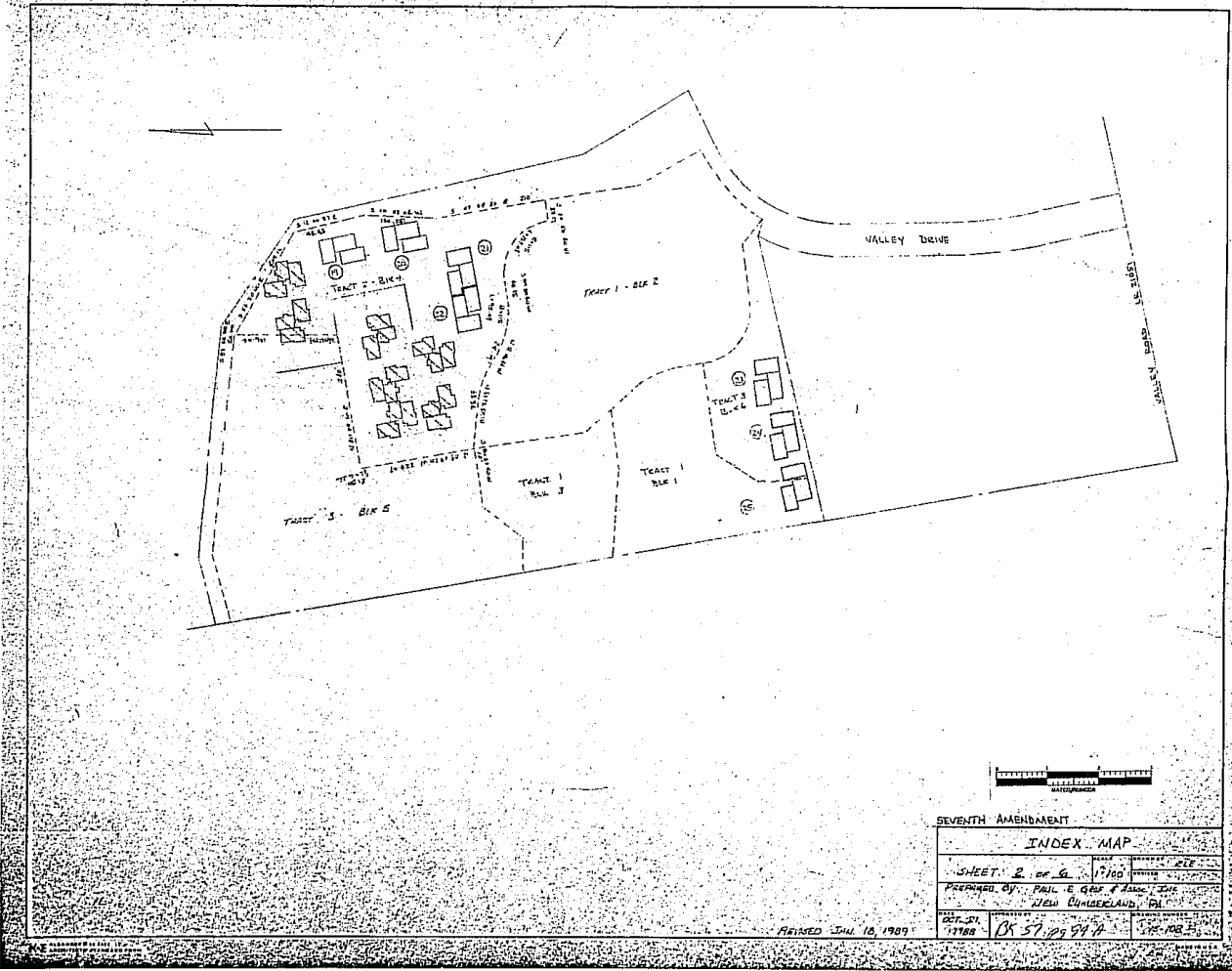
CONSULTING ENGINEERS
NEW CUMBERLAND, PENNSYLVANIA

Joseph A. Brown
REG. PROF. ENGINEER

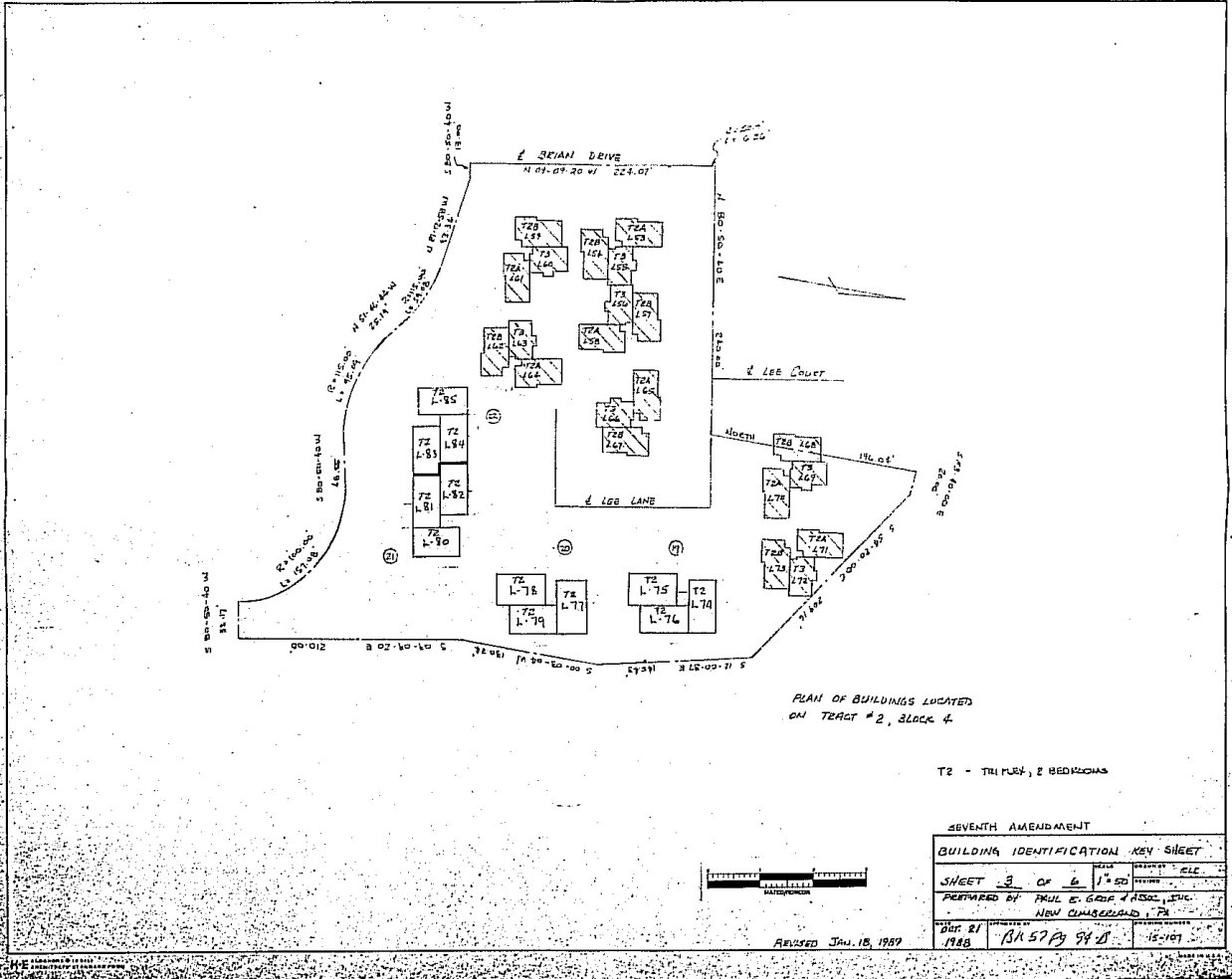
REGISTERED PROFESSIONAL ENGINEER
DANIELA P. HENDEL, Henry PAE
Law, P.O. Box 100, PA
By Certificate Expires Dec. 31, 1989

APR 15 1989

OCTOBER 24 1988



BK - 57 PG - 94 - A



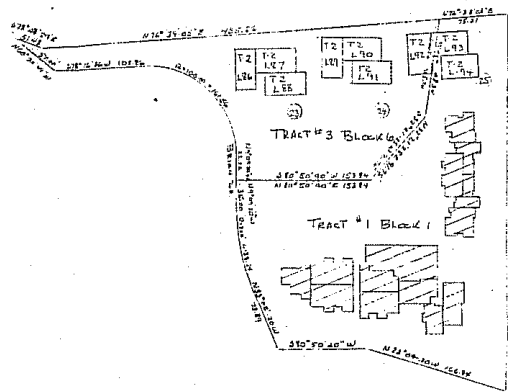
PLAN OF BUILDINGS LOCATED ON TRACT # 2, BLOCK 4.

T2 - TRIPLEX, 2 BEDROOMS

SEVENTH AMENDMENT			
BUILDING IDENTIFICATION KEY SHEET			
SHEET 3	OF 6	SCALE 1"=50'	DATE 1/15/87
PREPARED BY PAUL E. GOLF ASSOC., INC.			
NEW CUMBERLAND, PA			
DATE 2/1/88	BY BA 57 PG 94 B	15-1167	

REVISED JAN. 15, 1987

BK - 57 PG - 94 - B



PLAN OF BUILDINGS LOCATED ON
TRACT #1, BLOCK 1
TRACT #3, BLOCK 6

T2 - TRIPLEX, 2 BDRROOMS



REVISED JAN 10, 1969

SEVENTH AMENDMENT			
BUILDING IDENTIFICATION KEY SHEET			
SHEET	1	OF	2
SCALE	1" = 60'		
PREPARED BY	PAUL & GORDON ASSOCIATES, INC.		
	NEW CUMBERLAND, TENN.		
DATE	DEC. 21	PROJECT	BK 57 PG 94-C
	1968	DATE	1-15-1969

BK - 57 PG - 94 - C

BUILDING ADDRESS AND ELEVATION INDEX					
BUILDING NUMBER	BLOCK NUMBER	UNIT DESIGNATION AND POST OFFICE ADDRESS	FLOOR PLAN NUMBER	ELEVATIONS	
				1 st FLOOR	1 st FL. CEILING
10	4	757 LEE LANE	74	15-108-6	
		783 LEE LANE	75		
		755 LEE LANE	76		
		751 LEE LANE	77		
10		777 LEE LANE	78		
		779 LEE LANE	79		
10		775 LEE LANE	80		
		773 LEE LANE	81		
10		771 LEE LANE	82		
		831 CHARLOTTE WAY	83		
10	4	833 CHARLOTTE WAY	84		
		835 CHARLOTTE WAY	85		
10	6	840 MELISSA COURT	86		
		842 MELISSA COURT	87		
10		844 MELISSA COURT	88		
		846 MELISSA COURT	89		
10	6	848 MELISSA COURT	90		
		850 MELISSA COURT	91		
10	146	752 MELISSA COURT	92		
		754 MELISSA COURT	93		
10	1	854 MELISSA COURT	94	15-108-6	

INDEX		
	UNIT NUMBER	FLOOR PLAN NUMBER
TRACT 2 Block 9	L74 T2	15-108-6
"	L75 T2	
"	L76 T2	
"	L77 T2	
"	L78 T2	
"	L79 T2	
"	L80 T2	
"	L81 T2	
"	L82 T2	
"	L83 T2	
"	L84 T2	
"	L85 T2	
TRACT 2 Block 11	L86 T2	
"	L87 T2	
"	L88 T2	
"	L89 T2	
"	L90 T2	
"	L91 T2	
TRACT 3 Block 1	L92 T2	
TRACT 3 Block 2	L93 T2	
TRACT 3 Block 3	L94 T2	15-108-6

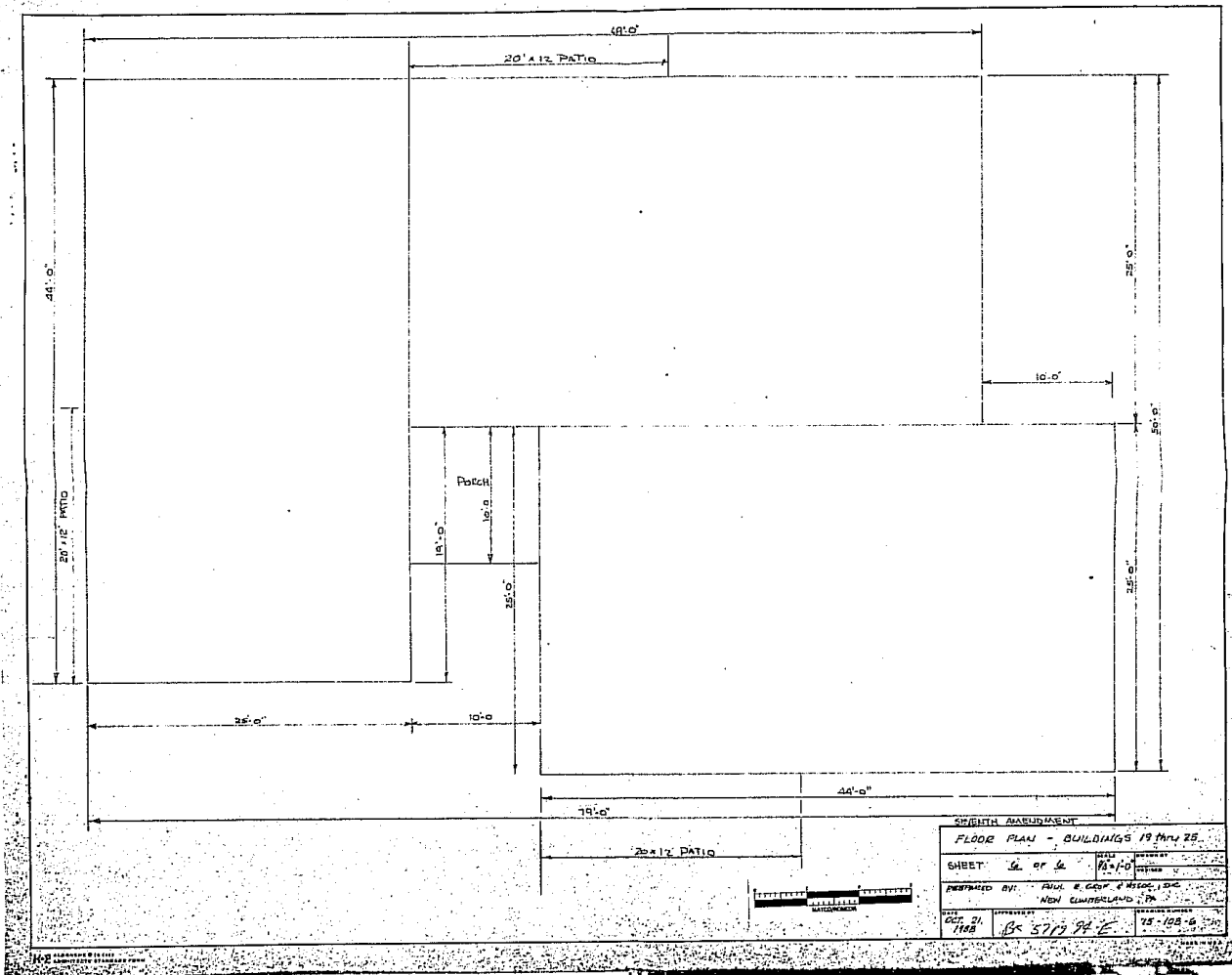
SEVENTH AMENDMENT
BUILDING ADDRESS AND ELEVATION INDEX

SHEET 5 OF 6

PREPARED BY: PAUL E. LLOYD & ASSOCIATES, INC.
Harrisburg, PA

DATE: 11/15/88
PROJECT: BK 57 PG 94-D

BK - 57 PG - 94 - D



SOUTH ARROW	
FLOOR PLAN - BUILDINGS 19 MAY 25	
SHEET: 6 of 6	DATE: 11-10-6
DRAWN BY: PAUL E. GERTZ & ASSOCIATES, INC.	
HIGH ENGINEERING, INC.	
DATE: OCT. 21, 1966	PROJECT: BK 57 PG 94 E
SCALE: 1/8" = 1'-0"	DATE: 11-10-6

BK - 57 PG - 94 - E